

SONOMA COUNTY MULTI-JURISDICTIONAL HAZARD MITIGATION PLAN

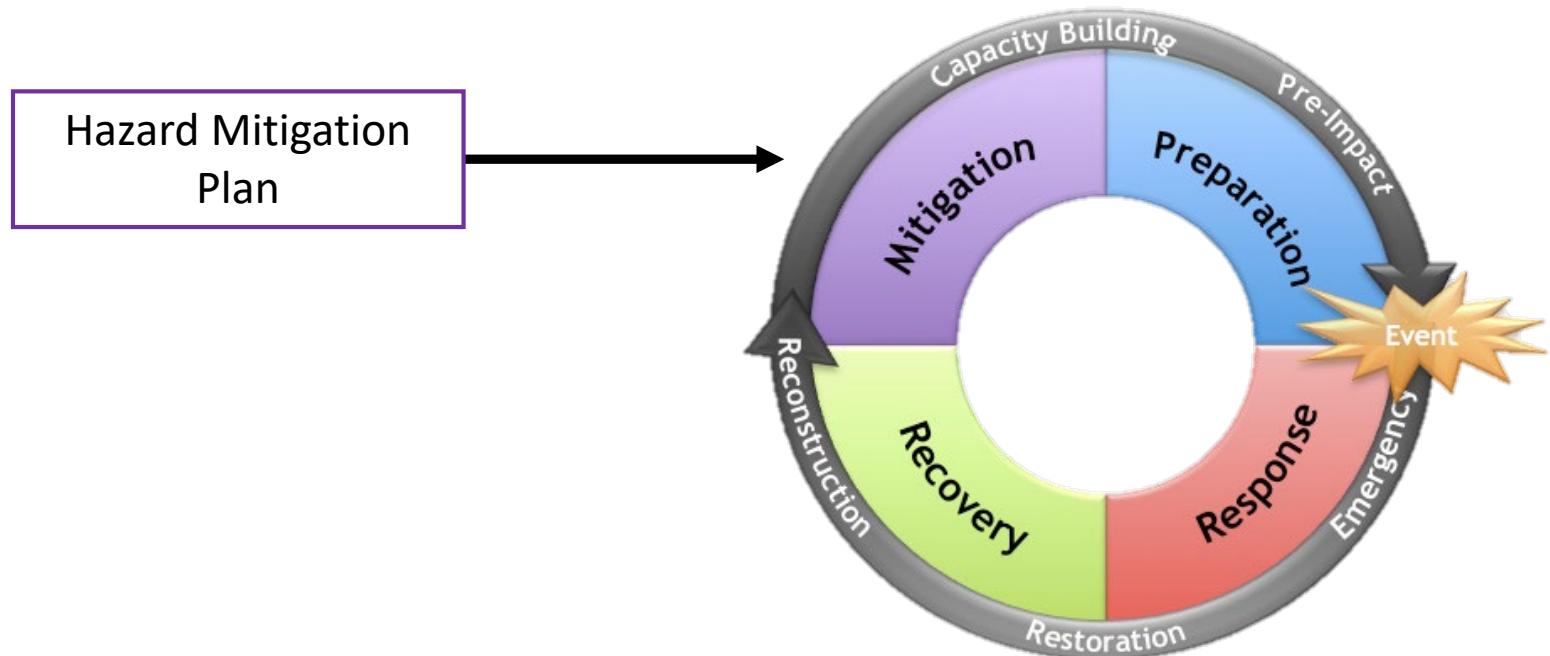
Katrina Braehmer, Project Manager
December 7, 2021

Overview

- Hazard Mitigation Planning, generally
- Development of the Multi-Jurisdictional Hazard Mitigation Plan (MJHMP) and Outreach
- Identified Hazards and Risk Assessment
- Mitigation Strategy
- Plan Maintenance and Next Steps

What is a Hazard Mitigation Plan

A mitigation plan establishes a broad local vision and guiding principles for reducing hazard risk, and proposes specific mitigation actions to eliminate or reduce identified vulnerabilities.



Types of Disaster Planning

Hazard Mitigation Plan

- Proactive risk mitigation planning
- Develops actions to reduce or eliminate risk from future hazard events
- Identifies implementation priorities based on an in-depth local hazard assessment

Emergency Operations Plan

- Event response planning
- Establishes overall operational concepts
- Details emergency management for any significant emergency or disaster

Background

- The federal Disaster Management Act of 2000 requires state and local governments to develop, and regularly update, hazard mitigation plans (HMPs) as a condition for federal disaster grant assistance.
- In 2019, Permit Sonoma applied for and received funding from the Federal Emergency Management Agency's (FEMA) Hazard Mitigation Grant Program to prepare an update to the 2016 Sonoma County Hazard Mitigation Plan.
- An updated HMP is necessary to maintain eligibility for federal disaster funding.
- In 2006, the Board adopted the first Sonoma County Hazard Mitigation Plan.
 - ▣ Subsequent plan updates adopted in 2011 and 2017, developed for County only.

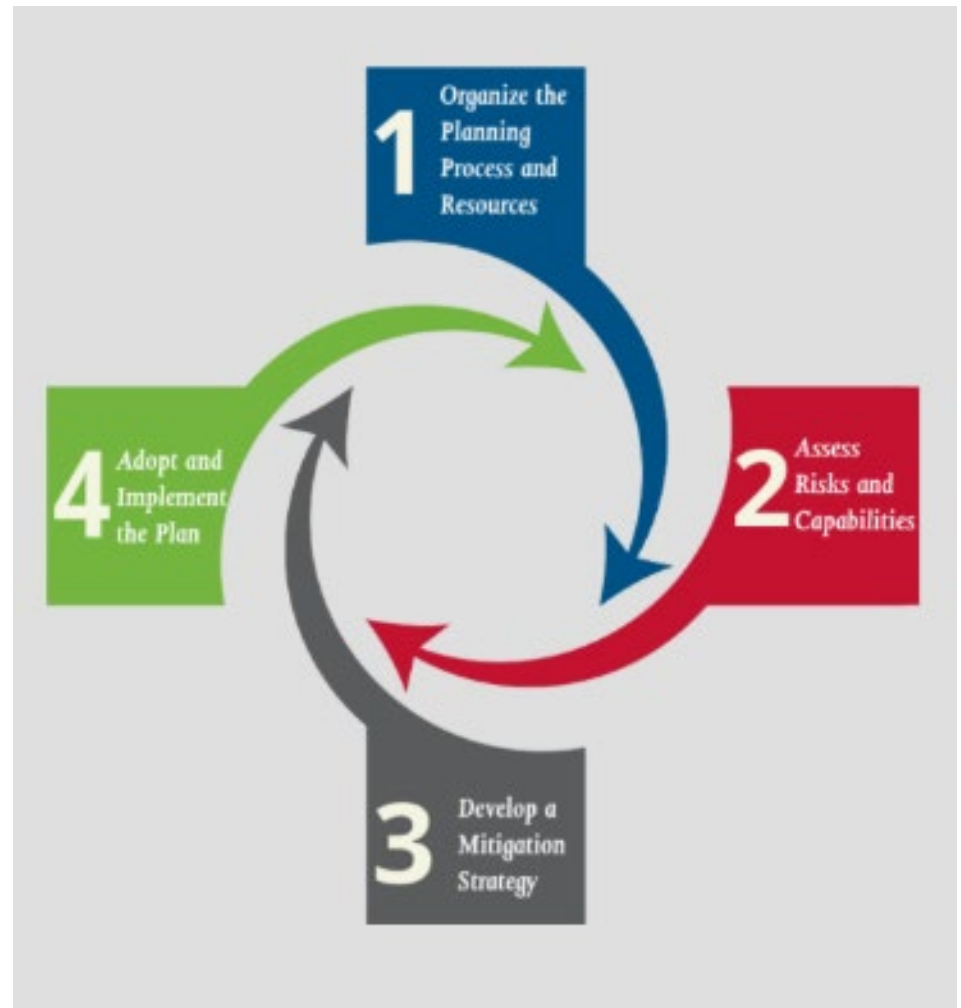
Functions of the MJHMP



1. Enhances public awareness and understanding of the hazards that threaten public health, safety, and welfare
2. Creates a decision tool for County leaders to take action to address vulnerabilities
3. Promotes compliance with State and Federal requirements to take advantage of disaster grant programs
4. Provides inter-jurisdictional coordination of mitigation-related programming

MJHMP Planning Process

- The County formed a planning partnership with 13 other local governments to develop the MJHMP.
- A 19-member steering committee comprised of planning partner representatives, citizens, and other stakeholders oversaw the plan development.
- The MJHMP is organized into 3 parts: Planning Process; Risk Assessment; and Mitigation Strategy



Participating Jurisdictions

- County of Sonoma
- City of Santa Rosa
- Town of Windsor
- City of Cotati
- City of Sonoma
- Sonoma County Ag + Open Space
- Gold Ridge Resource Conservation District
- Sonoma Resource Conservation District
- Rancho Adobe Fire Protection District (FPD)
- Geyserville FPD
- North Sonoma Coast FPD
- Cloverdale FPD
- Timber Cover FPD
- Sonoma Valley Fire District

2016 HMP vs. 2021 MJHMP

- The Plan format was adjusted to reflect the multi-jurisdiction plan approach.
- Expanded the identified hazards to include Dam Failure, Drought, Severe Weather, Sea-level Rise, and Tsunami as stand-alone hazard profiles.
- All hazard data was reviewed, refreshed and updated with the best available data to inform the risk assessment.
- The Plan provides the status of 2016 HMP actions:
 - ▣ 10 completed
 - ▣ 26 carried over
- The MJHMP includes an updated Plan maintenance strategy.

Outreach and Plan Review

□ **Public Survey**

- ▣ Results informed guiding principles, goals, and objectives
- ▣ Received 691 responses

□ **Events**

- ▣ February 2021: Virtual public meeting (~100 attendees)
- ▣ Spring 2021: Meetings with community organizations (~466 attendees)
- ▣ July 14-July 20, 2021: Public review period of draft Plan
- ▣ July 21, 2021: Virtual public meeting to receive comment on the draft Plan (~49 attendees)

□ **CalOES and FEMA Approval**

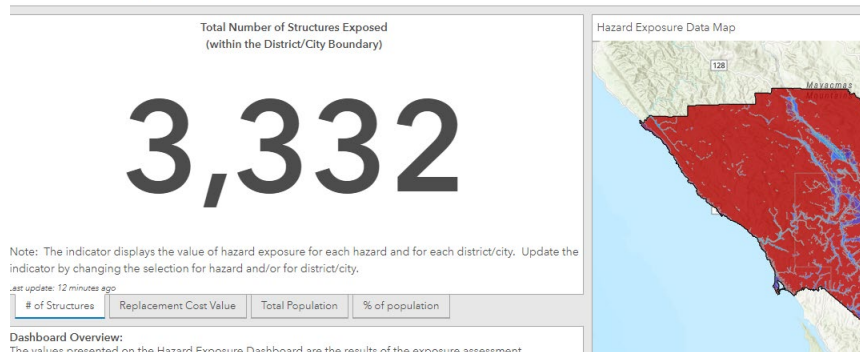
- ▣ Received approval pending adoption on September 27, 2021

Identified Hazards

Each hazard profile includes a summary of past events, geographic areas most affected, event frequency estimates, severity descriptions, and a discussion of likely warning times.

- Wildfire
- Earthquake
- Flooding
- Drought
- Landslide/ mass movement
- Severe weather
- Sea Level Rise
- Tsunami
- Climate change*

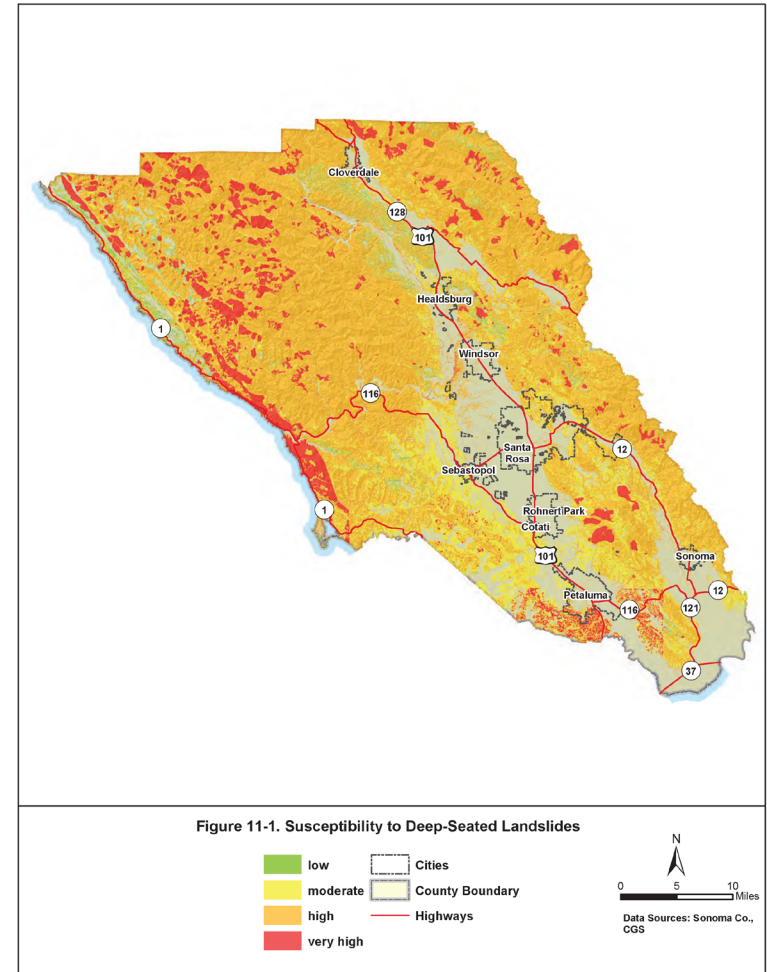
Sonoma County Hazard Exposure Dashboard



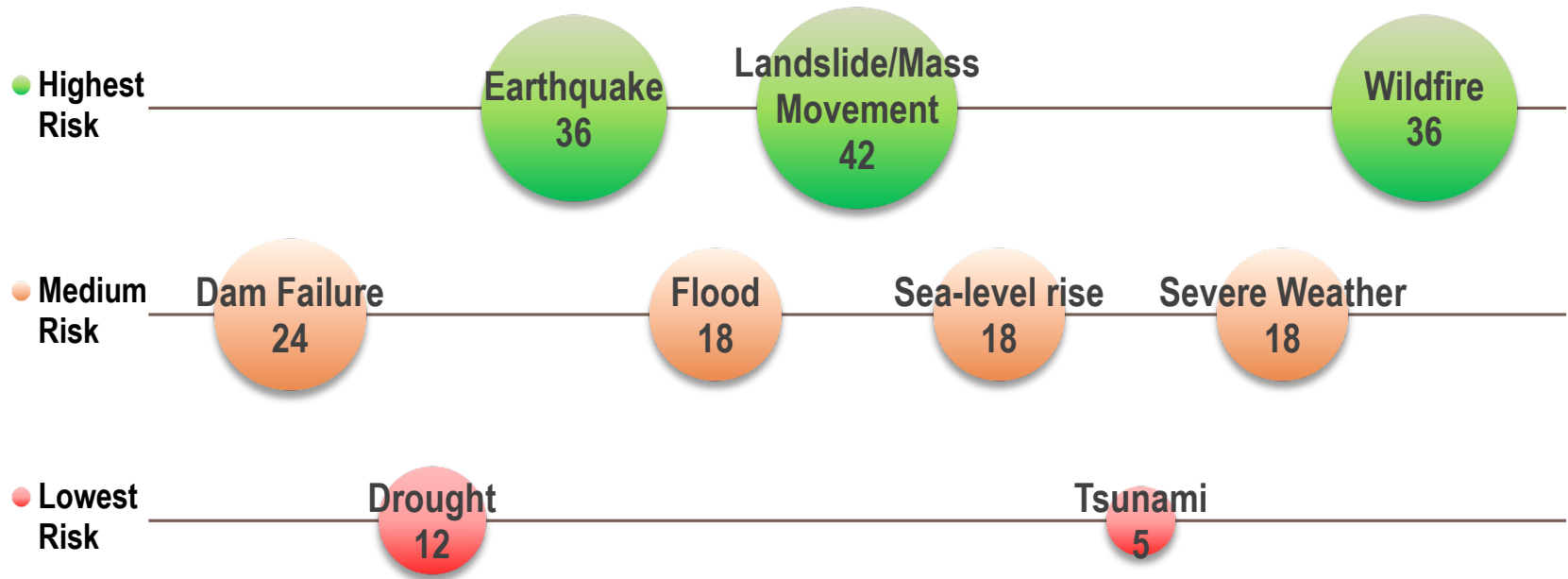
**The MJHMP discusses climate change and its effects on the planning area's exposure and vulnerability to hazards. A comprehensive climate change vulnerability assessment will be prepared with the upcoming General Plan Public Safety Element update.*

Risk and Vulnerability Assessment

- Determined exposure to each hazard
- Assessed vulnerability of populations, property, critical facilities, and environment based on probability of occurrence and exposure
- Assigned a risk rating for each hazard
 - ▣ **Risk = probability of occurrence x impact** on people, property, and economy
- The risk rating informed the mitigation strategy



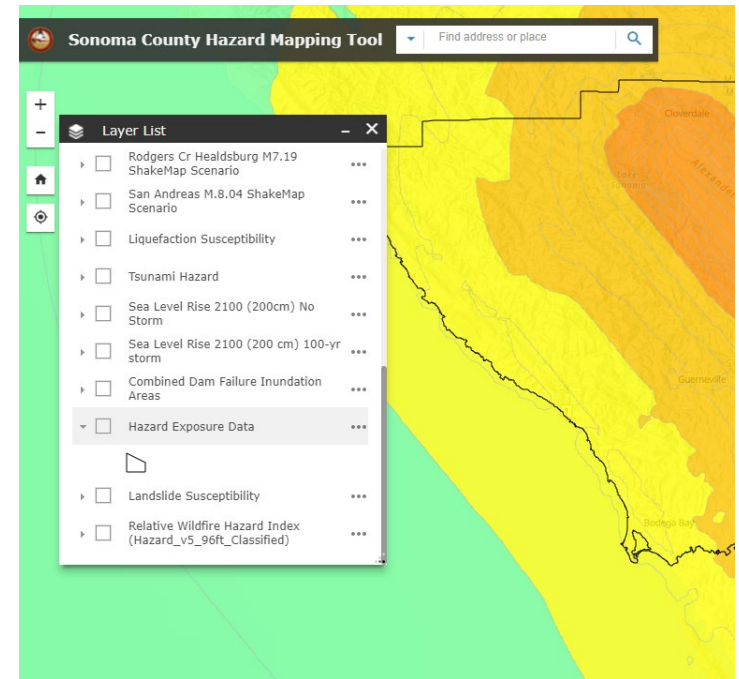
Countywide Risk Rating



Values shown are risk rating. Larger circles indicate higher rating.

MJHMP Story Map

- Provides a digital platform to learn about hazard mitigation planning and the MJHMP
- Presents the updated hazard and risk data for Sonoma County
- Provides a channel for the public to interact with hazard data; offers a report function
- Will report on annual progress of the MJHMP



Mitigation Strategy

- Intended to **protect** public safety; **prevent** loss of life and property; and **reduce** harm to existing and future development – buildings, infrastructure, businesses.
- Goals and objectives to reducing long-term vulnerabilities were developed with stakeholder input to measure the effectiveness of mitigation measures, and assign priority levels

Table 1-15. Mitigation Action Priority

Action #	# of Objectives Met	Benefits	Costs	Do Benefits Equal or Exceed Cost?	Is Project Grant-Eligible?	Can Project Be Funded Under Existing Programs/ Budgets?	Implementation Priority ^a	Grant Pursuit Priority ^a
SC-1	7	Medium	Low	Yes	No	Yes	High	N/A
SC-2	7	Medium	Low	Yes	No	Yes	High	N/A
SC-3	4	Medium	Medium	Yes	Yes	Yes	High	High
SC-4	3	Medium	Medium	Yes	No	Yes	High	N/A
SC-5	4	Medium	Low	Yes	No	Yes	High	N/A
SC-6	4	High	Low	Yes	Yes	Yes	High	High
SC-7	4	High	Low	Yes	Yes	Yes	High	High

Types of Mitigation Actions



Prevention

Property Protection

Public Education and Awareness

Natural Resource Protection

Emergency Services

Structural Projects

Climate Resilience

Community Capacity Building

Organization of Mitigation Actions

Mitigation Action/Strategy

Responsible Department, Division, Agency

Potential Funding Source(s)

Target Completion Date

Priority

Relative Cost

Maintenance and Monitoring

- The MJHMP outlines a plan maintenance and monitoring strategy, which includes preparation of annual progress reports.
- Permit Sonoma, with support from the Department of Emergency Management, will have lead responsibility for monitoring the plan.
- Permit Sonoma and DEM will identify grant funding opportunities for mitigation actions and notify partner jurisdictions.

Next Steps

- Identify and pursue available funding sources to implement mitigation actions
- Maintain and monitor Plan progress
- Utilize the risk assessment and hazard profiles to inform the upcoming General Plan Public Safety Element Update
 - ▣ Community Wildfire Protection Plan and MJHMP to be incorporated into the Safety Element

Recommendation



Adopt a resolution adopting the 2021 Sonoma County Multi-jurisdictional Hazard Mitigation Plan and determining that the plan is exempt from the California Environmental Quality Act (CEQA) under CEQA Guidelines Section 15262 and Section 15061(b)(3).

<https://sonomacounty.ca.gov/PRMD/Long-Range-Plans/Hazard-Mitigation-Update/>

