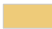







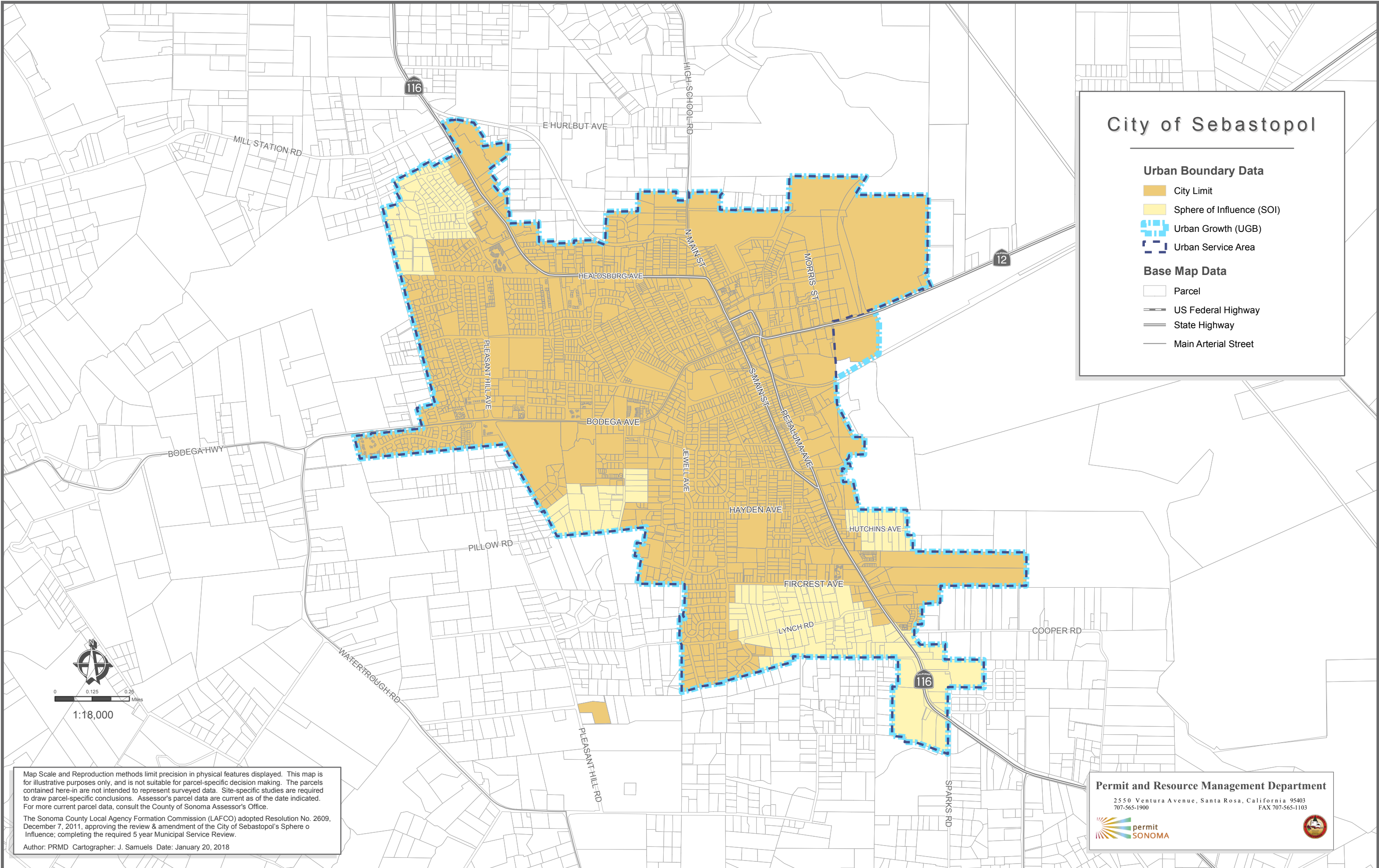
City of Sebastopol

Urban Boundary Data

-  City Limit
-  Sphere of Influence (SOI)
-  Urban Growth (UGB)
-  Urban Service Area

Base Map Data

-  Parcel
-  US Federal Highway
-  State Highway
-  Main Arterial Street



0 0.125 0.25 Miles

1:18,000

Map Scale and Reproduction methods limit precision in physical features displayed. This map is for illustrative purposes only, and is not suitable for parcel-specific decision making. The parcels contained here-in are not intended to represent surveyed data. Site-specific studies are required to draw parcel-specific conclusions. Assessor's parcel data are current as of the date indicated. For more current parcel data, consult the County of Sonoma Assessor's Office.

The Sonoma County Local Agency Formation Commission (LAFCO) adopted Resolution No. 2609, December 7, 2011, approving the review & amendment of the City of Sebastopol's Sphere of Influence; completing the required 5 year Municipal Service Review.

Author: PRMD Cartographer: J. Samuels Date: January 20, 2018

Permit and Resource Management Department

2550 Ventura Avenue, Santa Rosa, California 95403
707-565-1900 FAX 707-565-1103

