









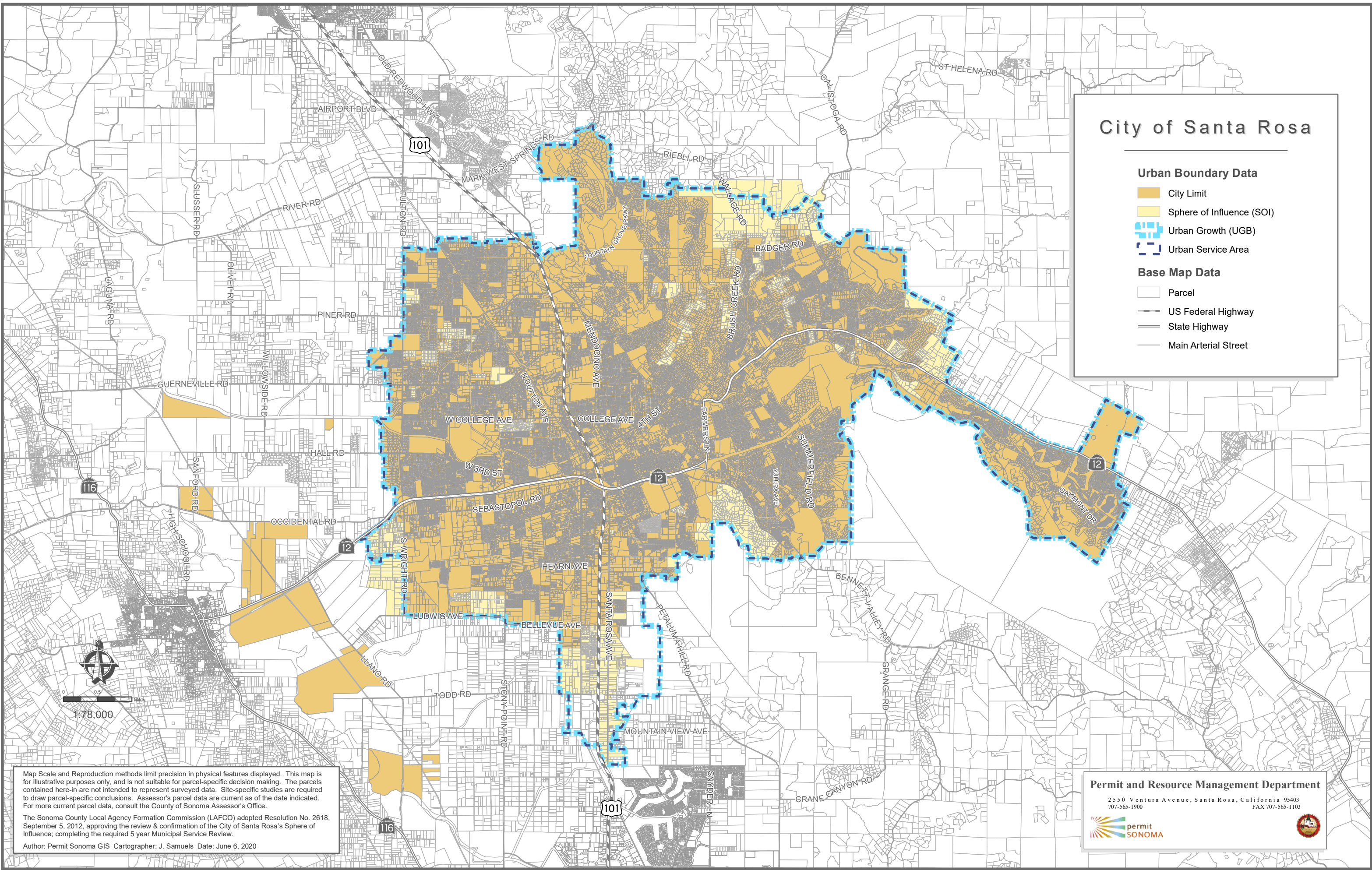
City of Santa Rosa

Urban Boundary Data

-  City Limit
-  Sphere of Influence (SOI)
-  Urban Growth (UGB)
-  Urban Service Area

Base Map Data

-  Parcel
-  US Federal Highway
-  State Highway
-  Main Arterial Street



Map Scale and Reproduction methods limit precision in physical features displayed. This map is for illustrative purposes only, and is not suitable for parcel-specific decision making. The parcels contained here-in are not intended to represent surveyed data. Site-specific studies are required to draw parcel-specific conclusions. Assessor's parcel data are current as of the date indicated. For more current parcel data, consult the County of Sonoma Assessor's Office.

The Sonoma County Local Agency Formation Commission (LAFCO) adopted Resolution No. 2618, September 5, 2012, approving the review & confirmation of the City of Santa Rosa's Sphere of Influence; completing the required 5 year Municipal Service Review.

Author: Permit Sonoma GIS Cartographer: J. Samuels Date: June 6, 2020

Permit and Resource Management Department
 2550 Ventura Avenue, Santa Rosa, California 95403
 707-565-1900 FAX 707-565-1103

