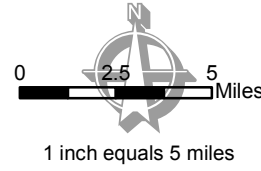
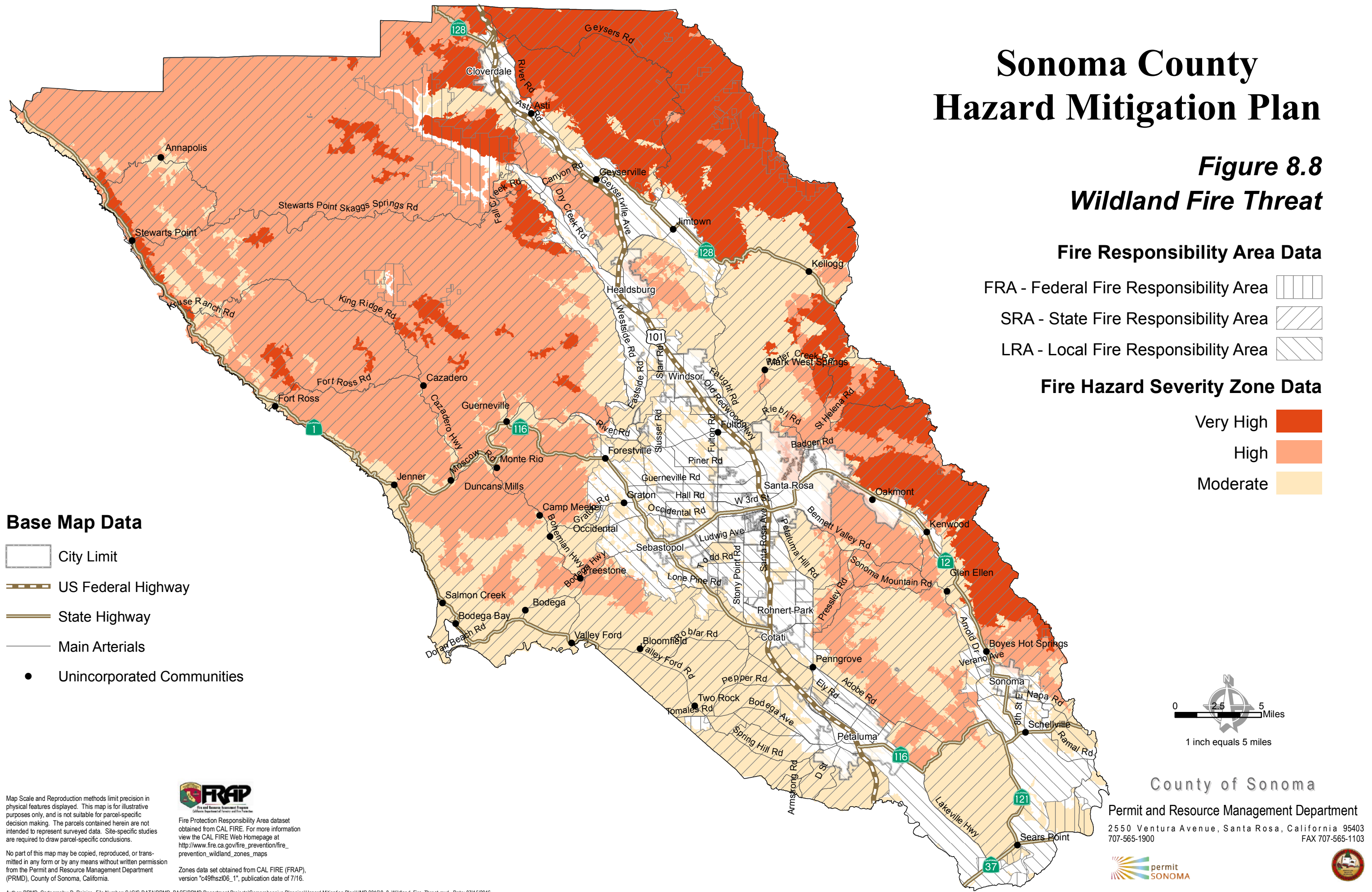


Sonoma County Hazard Mitigation Plan

**Figure 8.8
Wildland Fire Threat**



County of Sonoma
Permit and Resource Management Department
2550 Ventura Avenue, Santa Rosa, California 95403
707-565-1900 FAX 707-565-1103



Map Scale and Reproduction methods limit precision in physical features displayed. This map is for illustrative purposes only, and is not suitable for parcel-specific decision making. The parcels contained herein are not intended to represent surveyed data. Site-specific studies are required to draw parcel-specific conclusions.

No part of this map may be copied, reproduced, or transmitted in any form or by any means without written permission from the Permit and Resource Management Department (PRMD), County of Sonoma, California.

FRAP
Fire and Resource Assessment Program
California Department of Forestry and Fire Services

Fire Protection Responsibility Area dataset obtained from CAL FIRE. For more information view the CAL FIRE Web Homepage at http://www.fire.ca.gov/fire_prevention/fire_prevention_wildland_zones_maps

Zones data set obtained from CAL FIRE (FRAP), version "c49fhsz106_1", publication date of 7/16.