

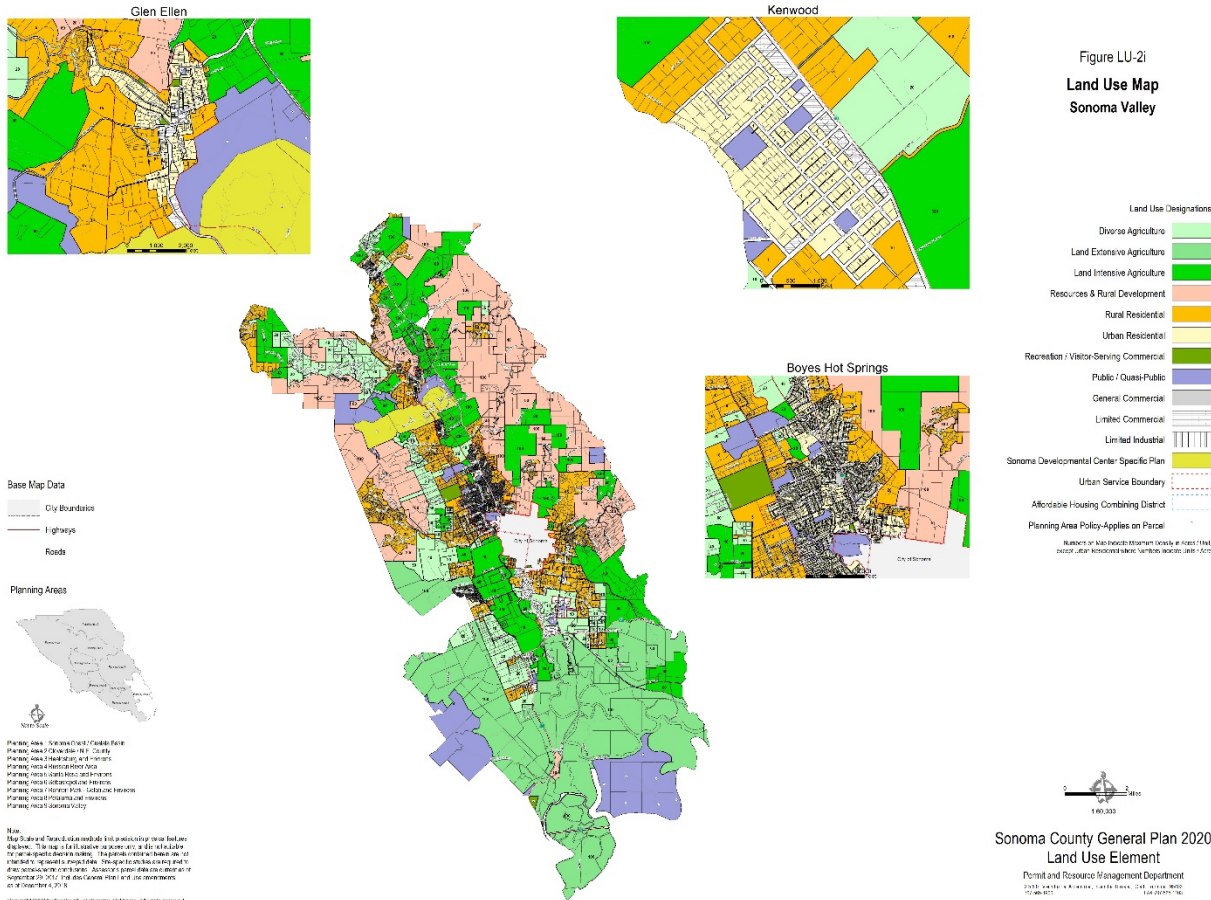
Sonoma Developmental Center Specific Plan – General Plan Consistency

Brian Oh
Permit Sonoma
Sept 26, 2022

General Plan Consistency

- Proposed Specific Plan goals and policies are consistent with the Sonoma County General Plan
- Two General Plan amendments will be needed
 - ▣ Update land use map
 - ▣ Add a new Land Use Element policy

Update Land Use Figure LU-2i map



□ New land use designation to reflect Sonoma Developmental Center parcels

Add a new Land Use Element policy

- The County shall use the Sonoma Developmental Center Specific Plan to implement this plan and all development located in the Sonoma Developmental Center Specific Plan area, noted in Figure LU-2i, shall conform with policies and programs identified in the Sonoma Developmental Center Specific Plan (*proposed amendment to General Plan 2020*)

Proposed Zoning - PCSDC

- Planned Community, Sonoma Developmental Center
 - Low/medium residential
 - Medium/flex residential
 - Flex
 - Hotel overlay
 - Institutional
 - Utilities
 - Parks
 - Open space
 - Preserved
 - Buffer

For more details, see draft Specific Plan Chapter 4 (Land Use) and Chapter 5 (Community Design)*

Proposed Land Use

