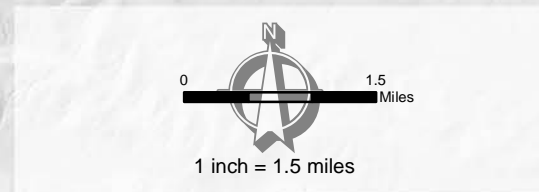
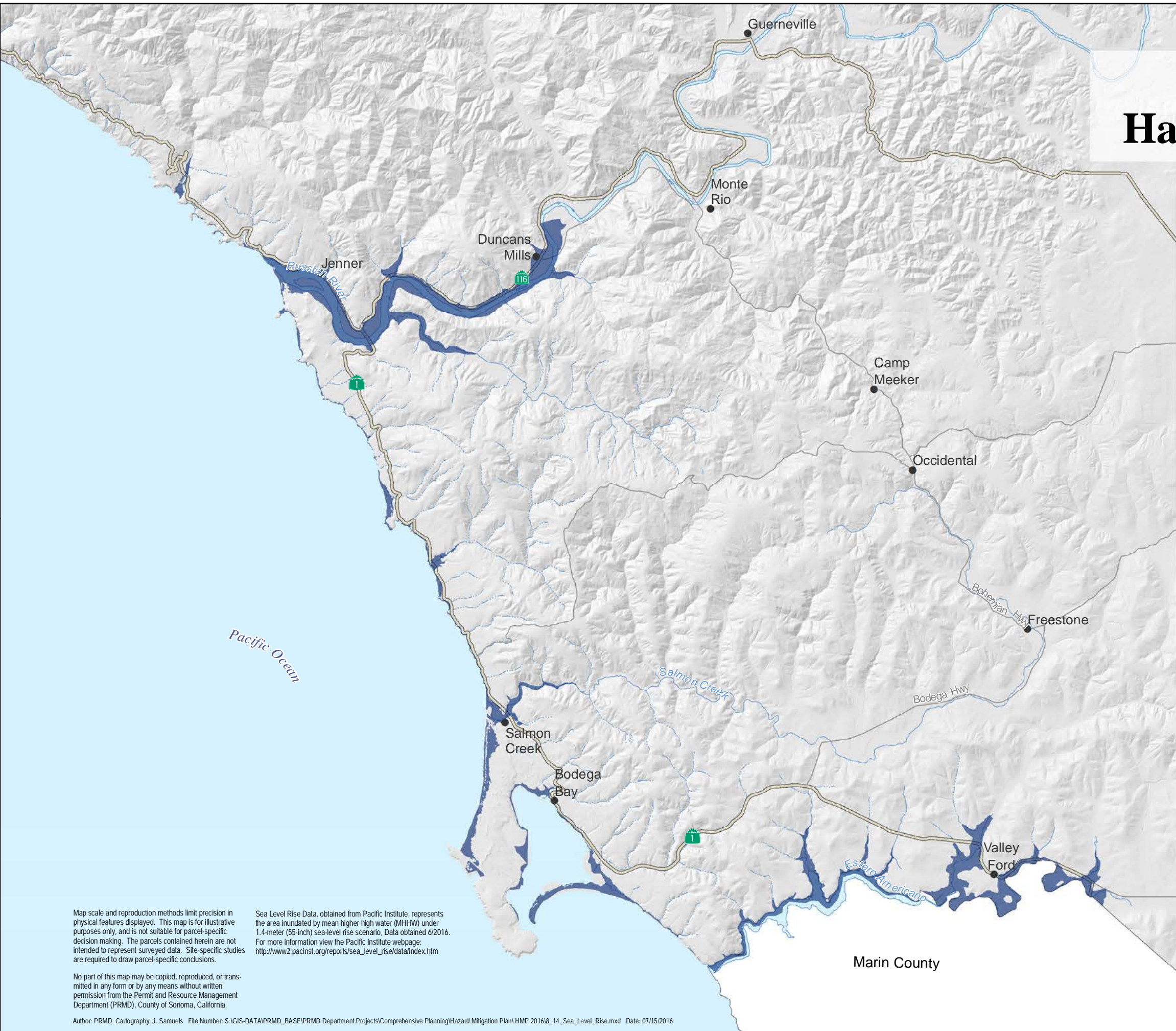


Sonoma County Hazard Mitigation Plan

Figure 8.14
Sea Level Rise
South Sonoma Coast

- Sea Level Rise Data**
- Potential Sea Level Rise
- Base Map Data**
- State Highway
 - Main Arterial
 - Perennial Stream
 - Intermittent Stream
 - Unincorporated Communities



Map scale and reproduction methods limit precision in physical features displayed. This map is for illustrative purposes only, and is not suitable for parcel-specific decision making. The parcels contained herein are not intended to represent surveyed data. Site-specific studies are required to draw parcel-specific conclusions.

Sea Level Rise Data, obtained from Pacific Institute, represents the area inundated by mean higher high water (MHHW) under 1.4-meter (55-inch) sea-level rise scenario. Data obtained 6/2016. For more information view the Pacific Institute webpage: http://www2.pacinst.org/reports/sea_level_rise/data/index.htm

No part of this map may be copied, reproduced, or transmitted in any form or by any means without written permission from the Permit and Resource Management Department (PRMD), County of Sonoma, California.

Author: PRMD Cartography: J. Samuels File Number: S:\GIS-DATA\PRMD_BASE\PRMD Department Projects\Comprehensive Planning\Hazard Mitigation Plan\HMP 2016\8_14_Sea_Level_Rise.mxd Date: 07/15/2016

County of Sonoma

Permit and Resource Management Department

2550 Ventura Avenue, Santa Rosa, California 95403
707-565-1900 FAX 707-565-1103