

Sonoma County Hazard Mitigation Plan

Figure 8.11
Landslide Hazard Areas

Very High Landslide Susceptibility Data

X
 IX
 VIII

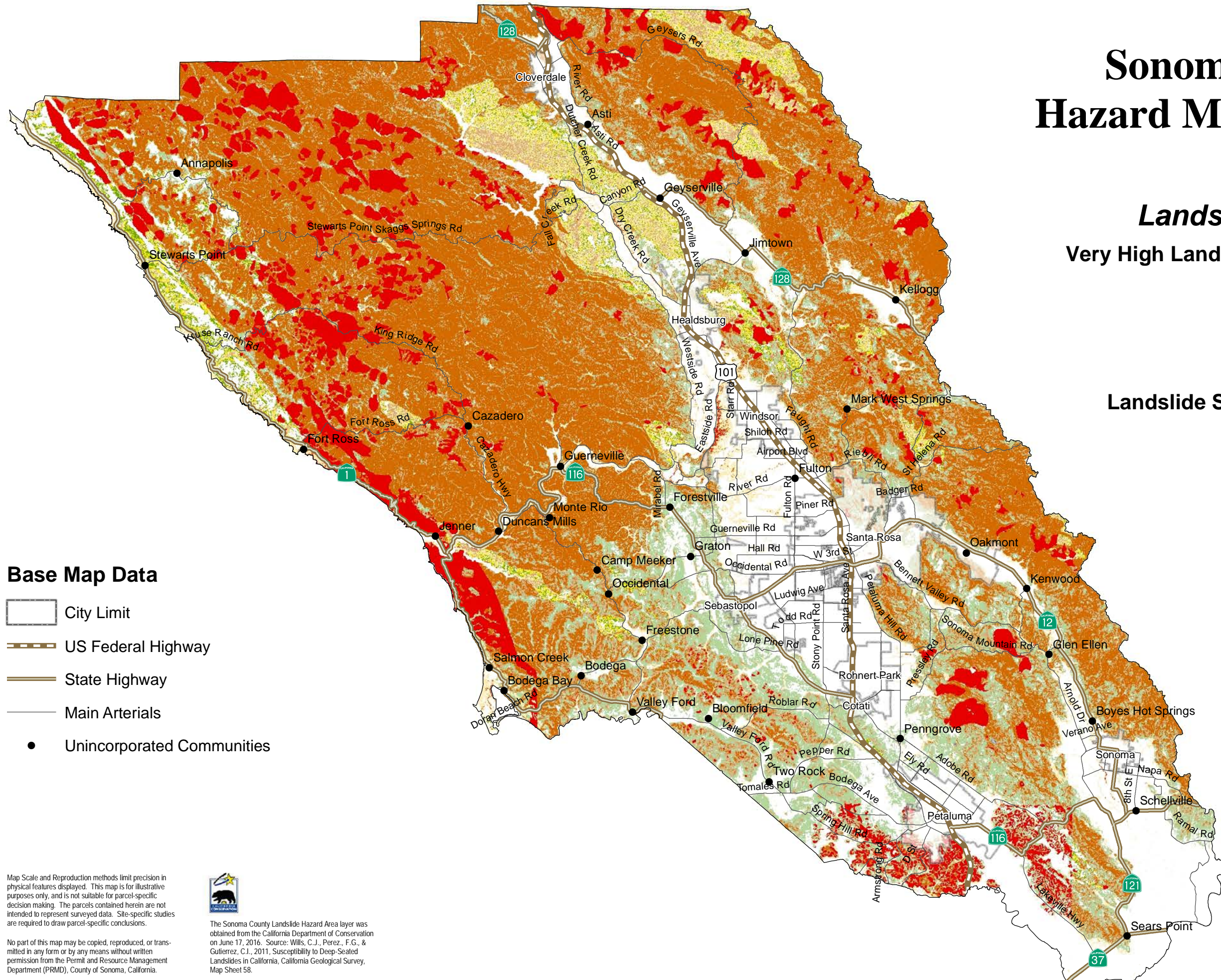
Landslide Susceptibility Class Data

[increase susceptibility: 0 → X]

ROCK STRENGTH

1
2
3

SLOPE CLASS	ROCK STRENGTH		
	1	2	3
1	0	0	0
2	0	V	VII
3	0	V	VII
4	III	VIII	IX
5	VI	IX	X
6	VII	IX	X
7	VIII	IX	X
8	VIII	IX	X



Base Map Data

- City Limit
- US Federal Highway
- State Highway
- Main Arterials
- Unincorporated Communities

1 inch equals 5 miles

Map Scale and Reproduction methods limit precision in physical features displayed. This map is for illustrative purposes only, and is not suitable for parcel-specific decision making. The parcels contained herein are not intended to represent surveyed data. Site-specific studies are required to draw parcel-specific conclusions.



The Sonoma County Landslide Hazard Area layer was obtained from the California Department of Conservation on June 17, 2016. Source: Wills, C.J., Perez, F.G., & Gutierrez, C.I., 2011, Susceptibility to Deep-Seated Landslides in California, California Geological Survey, Map Sheet 58.

No part of this map may be copied, reproduced, or transmitted in any form or by any means without written permission from the Permit and Resource Management Department (PRMD), County of Sonoma, California.

County of Sonoma
 Permit and Resource Management Department
 2550 Ventura Avenue, Santa Rosa, California 95403
 707-565-1900 FAX 707-565-1103

