

Monte Rio

Forestville

Guerneville

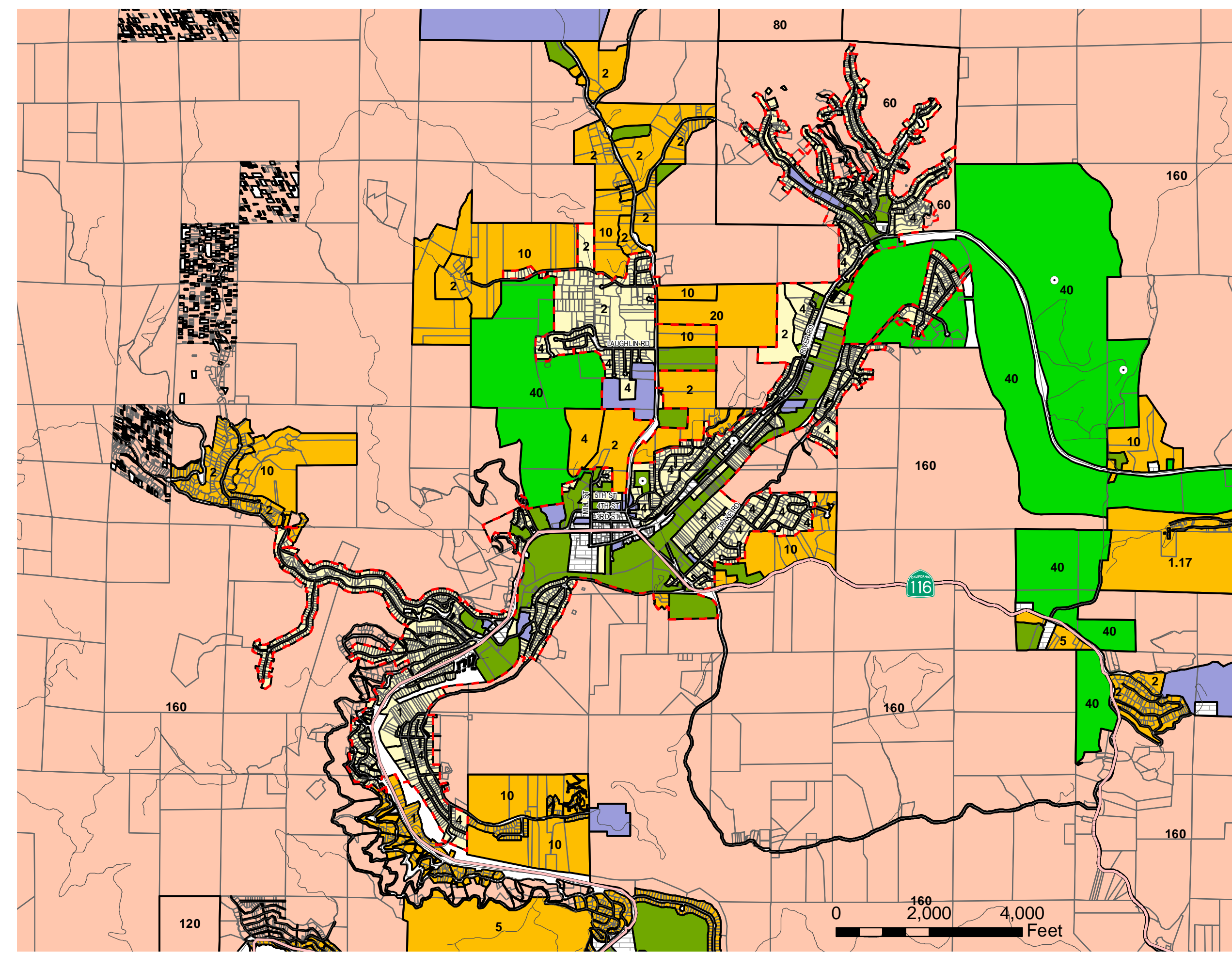
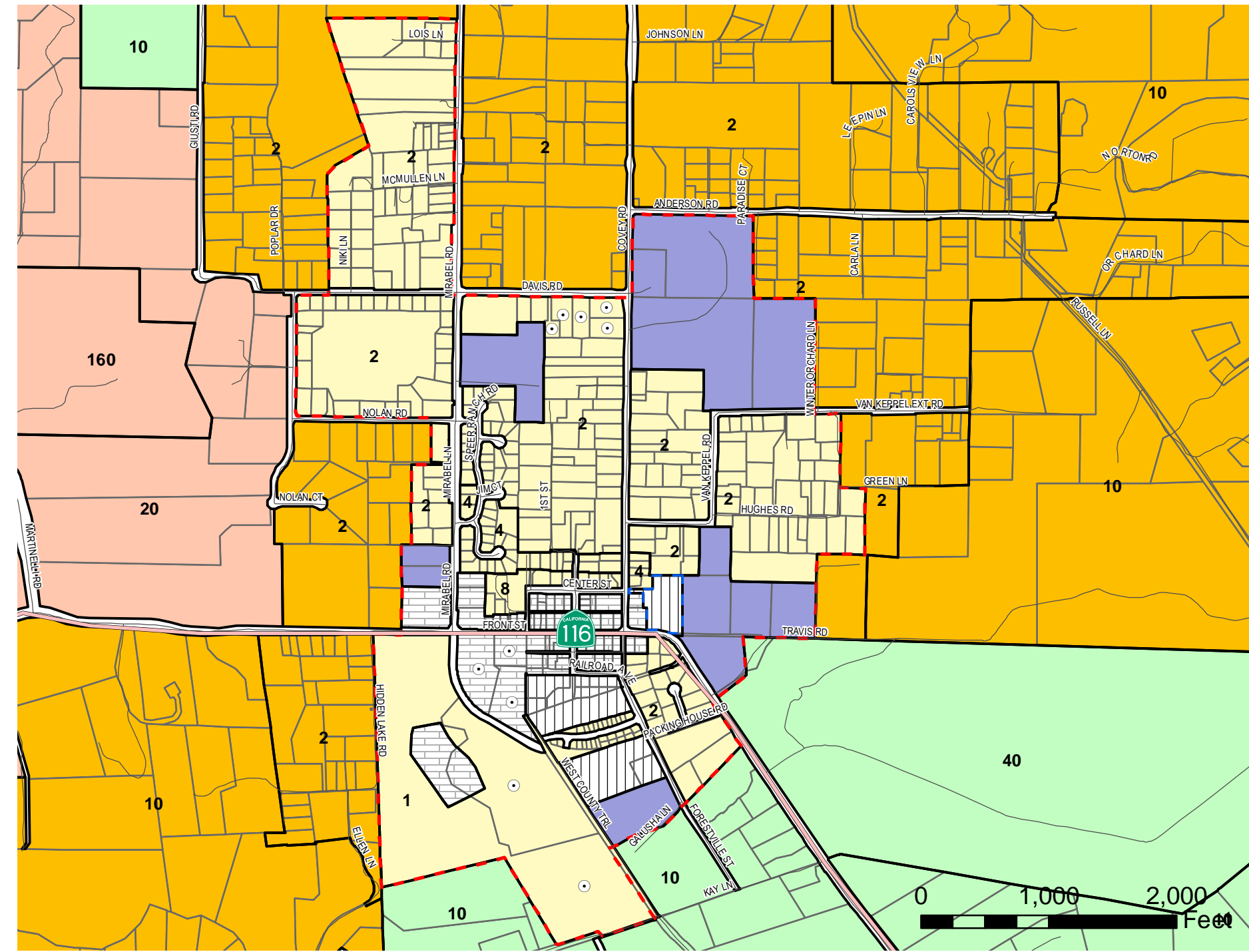
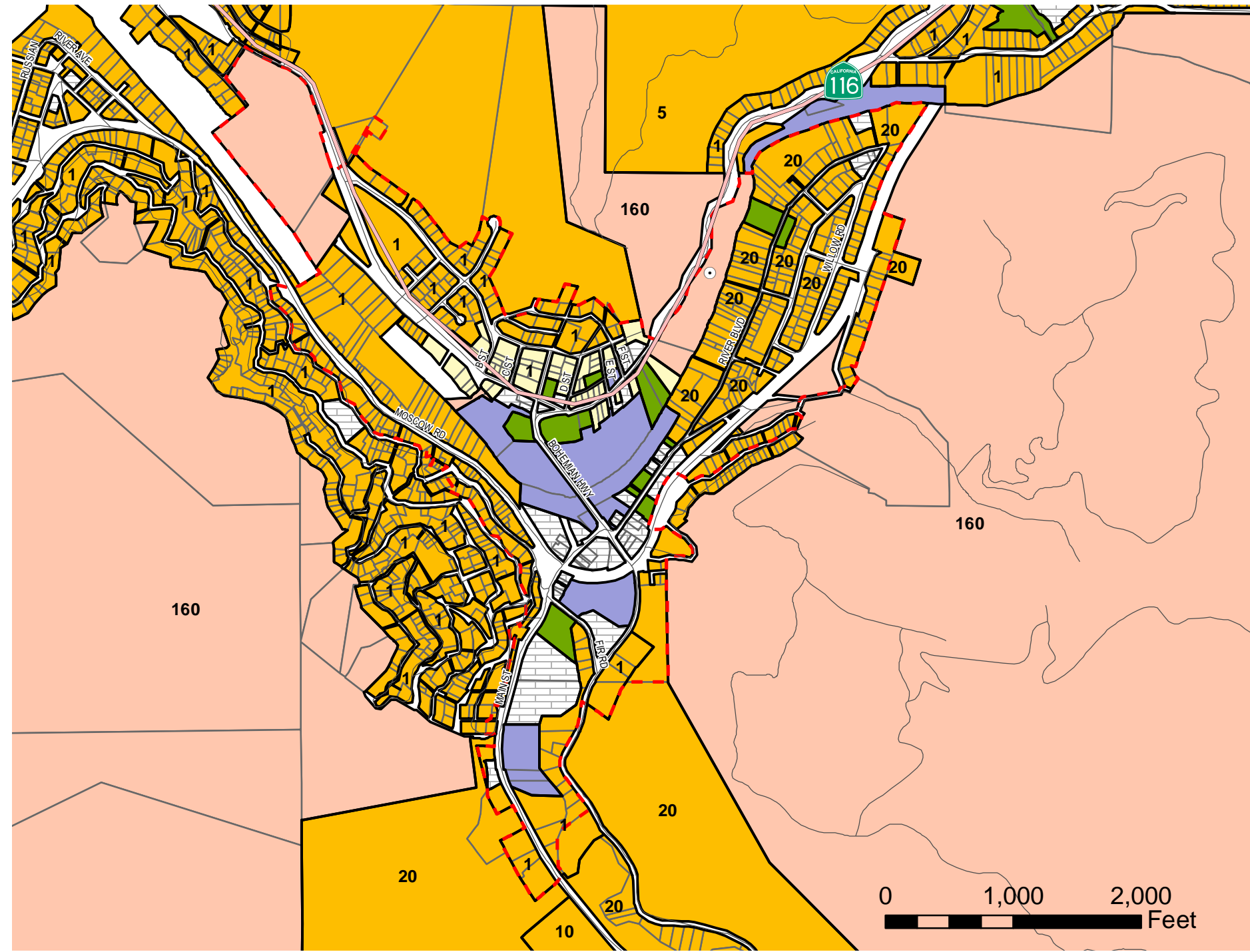


Figure LU-2d
Land Use Map
Russian River Area

Land Use Designations

- Diverse Agriculture
- Land Extensive Agriculture
- Land Intensive Agriculture
- Resources & Rural Development
- Rural Residential
- Urban Residential
- Recreation / Visitor-Serving Commercial
- Public / Quasi-Public
- Limited Commercial
- Limited Industrial
- Urban Service Boundary
- Affordable Housing Combining District
- Planning Area Policy-Applies on Parcel

Numbers on Map Indicate Maximum Density in Acres / Unit, except Urban Residential where Numbers Indicate Units / Acre

Base Map Data

- Coastal Commission Boundary
- Highways
- Roads

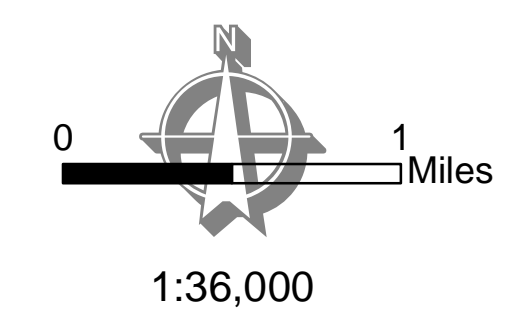
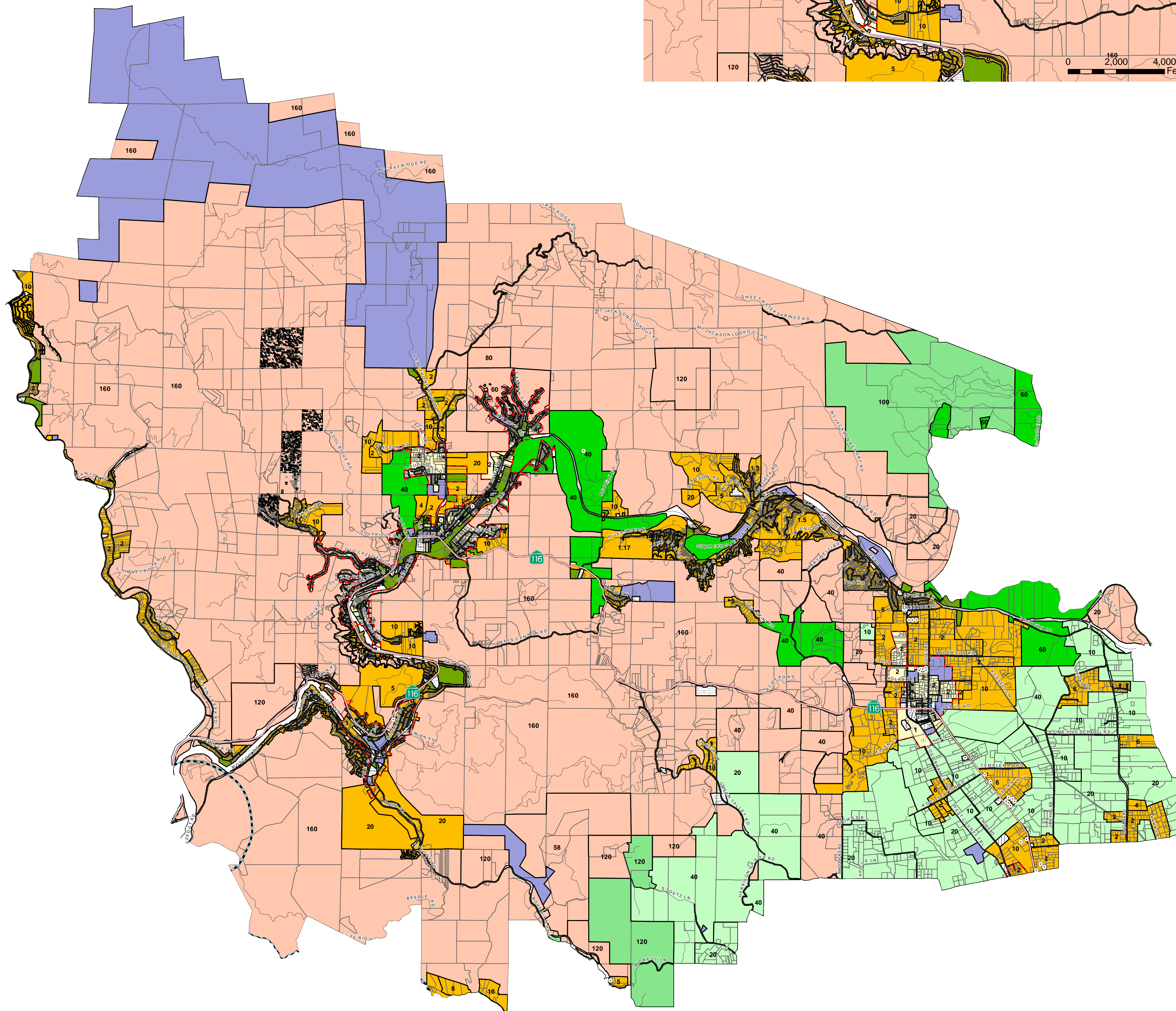
Planning Areas



- Planning Area 1 Sonoma Coast / Gualala Basin
- Planning Area 2 Cloverdale / N.E. County
- Planning Area 3 Healdsburg and Environs
- Planning Area 4 Russian River Area
- Planning Area 5 Santa Rosa and Environs
- Planning Area 6 Sebastopol and Environs
- Planning Area 7 Rohnert Park - Cotati and Environs
- Planning Area 8 Petaluma and Environs
- Planning Area 9 Sonoma Valley

Note:
Map Scale and Reproduction methods limit precision in physical features displayed. This map is for illustrative purposes only, and is not suitable for parcel-specific decision making. The parcels contained herein are not intended to represent surveyed data. Site-specific studies are required to draw parcel-specific conclusions. Assessor's parcel data are current as of September 29, 2017. Includes General Plan Land Use amendments as of January 5, 2016.

Copyright 2003 by the County of Sonoma, California. All rights reserved. No part of this map may be copied, reproduced, or transmitted in any form or by any means without written permission from the Permit and Resource Management Department (PRMD), County of Sonoma, California.



Sonoma County General Plan 2020
Land Use Element

Permit and Resource Management Department
2550 Ventura Avenue, Santa Rosa, California 95403
707-565-1900 FAX 707-565-1103

