

Figure PS-1d

Deep-seated Landslide Hazard Areas

Very High Landslide Susceptibility Data

Very high landslide susceptibility; classes VIII, IX, and X, include very steep slopes in hard rock and moderate to very steep slopes in weak rock.

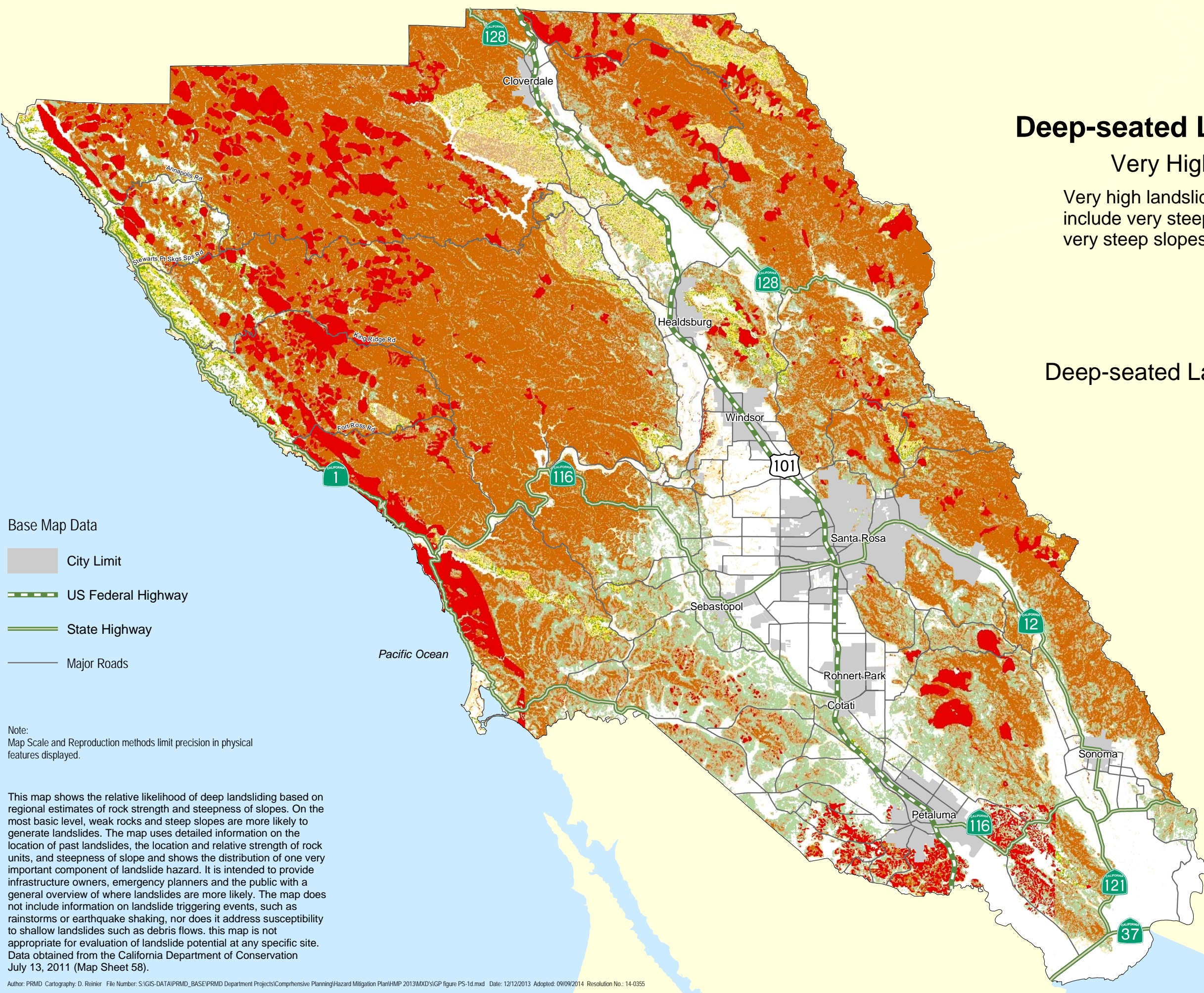


Deep-seated Landslide Susceptibility Classes

[increase susceptibility: 0 → X]

ROCK STRENGTH

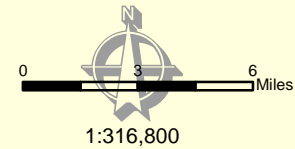
		1	2	3
SLOPE CLASS	1	0	0	0
	2	0	V	VII
	3	0	V	VII
	4	III	VIII	IX
	5	VI	IX	X
	6	VII	IX	X
	7	VIII	IX	X
	8	VIII	IX	X



- Base Map Data**
- City Limit
 - US Federal Highway
 - State Highway
 - Major Roads

Note:
Map Scale and Reproduction methods limit precision in physical features displayed.

This map shows the relative likelihood of deep landsliding based on regional estimates of rock strength and steepness of slopes. On the most basic level, weak rocks and steep slopes are more likely to generate landslides. The map uses detailed information on the location of past landslides, the location and relative strength of rock units, and steepness of slope and shows the distribution of one very important component of landslide hazard. It is intended to provide infrastructure owners, emergency planners and the public with a general overview of where landslides are more likely. The map does not include information on landslide triggering events, such as rainstorms or earthquake shaking, nor does it address susceptibility to shallow landslides such as debris flows. this map is not appropriate for evaluation of landslide potential at any specific site. Data obtained from the California Department of Conservation July 13, 2011 (Map Sheet 58).



Sonoma County General Plan 2020 Public Safety Element

Permit and Resource Management Department
2550 Ventura Avenue, Santa Rosa, California 95403
707-565-1900 FAX 707-565-1103

