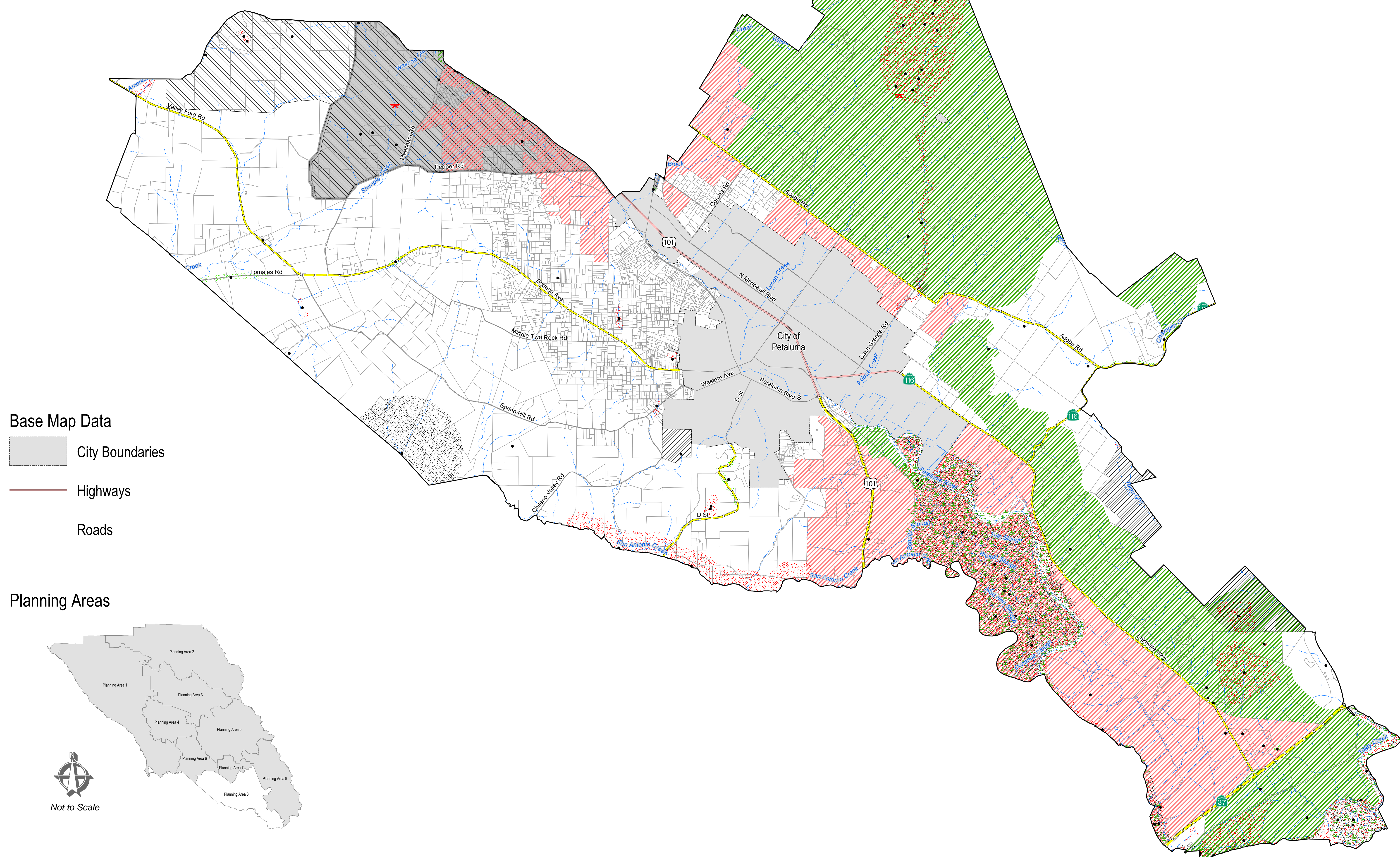


Figure OSRC-5h
Open Space Map
Petaluma and Environs



Base Map Data
 City Boundaries
 Highways
 Roads



Planning Area 1 Sonoma Coast / Gualala Basin
 Planning Area 2 Cloverdale / N.E. County
 Planning Area 3 Healdsburg and Environs
 Planning Area 4 Russian River Area
 Planning Area 5 Santa Rosa and Environs
 Planning Area 6 Sebastopol and Environs
 Planning Area 7 Rohnert Park - Cotati and Environs
 Planning Area 8 Petaluma and Environs
 Planning Area 9 Sonoma Valley

Note:
 Map Scale and Reproduction methods limit precision in physical features displayed. This map is for illustrative purposes only, and is not suitable for parcel-specific decision making. The parcels contained herein are not intended to represent surveyed data. Site-specific studies are required to draw parcel-specific conclusions. Assessor's parcel data are current as of June 3, 2016. Includes General Plan Open Space amendments as of October 9, 2018. The California Department of Fish and Game California Natural Diversity Database (CNDDDB) is current as of December 3, 2018.

Copyright 2003 by the County of Sonoma, California. All rights reserved. No part of this map may be copied, reproduced, or transmitted in any form or by any means without written permission from the Permit and Resource Management Department (PRMD), County of Sonoma, California.

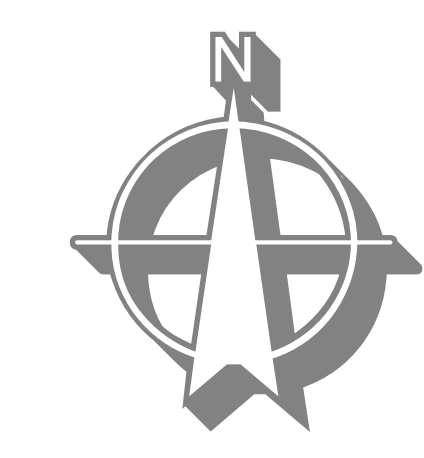
Author: PRMD File: S:\GIS-DATA\PRMD_BASE\PRMD Department Projects\Comprehensive Planning\General Plan 2020\GP Figure OSRC-5h E size.mxd Date: 10/09/2018

Outdoor Recreation Areas
 Planned Parks
 Existing Parks

Scenic Resources
 Scenic Landscape Units
 Community Separators
 Scenic Corridors

Biotic Resources
 Riparian Corridors
 Designated Streams

Biotic Habitat Areas
 Marshes and Wetlands
 Sensitive Natural Communities
 Special Status Species Habitat
 Plant
 Animal
 Occurrences of Special Status Species
 Calif. Tiger Salamander Critical Habitat - USFWS
 Potential Range of California Tiger Salamander



0 0.75 1.5
Miles

1 inch equals 0.75 miles

Sonoma County General Plan 2020
Open Space & Resource Conservation Element

Permit and Resource Management Department
 2550 Ventura Avenue, Santa Rosa, California 95403
 707-565-1900 FAX 707-565-1103

