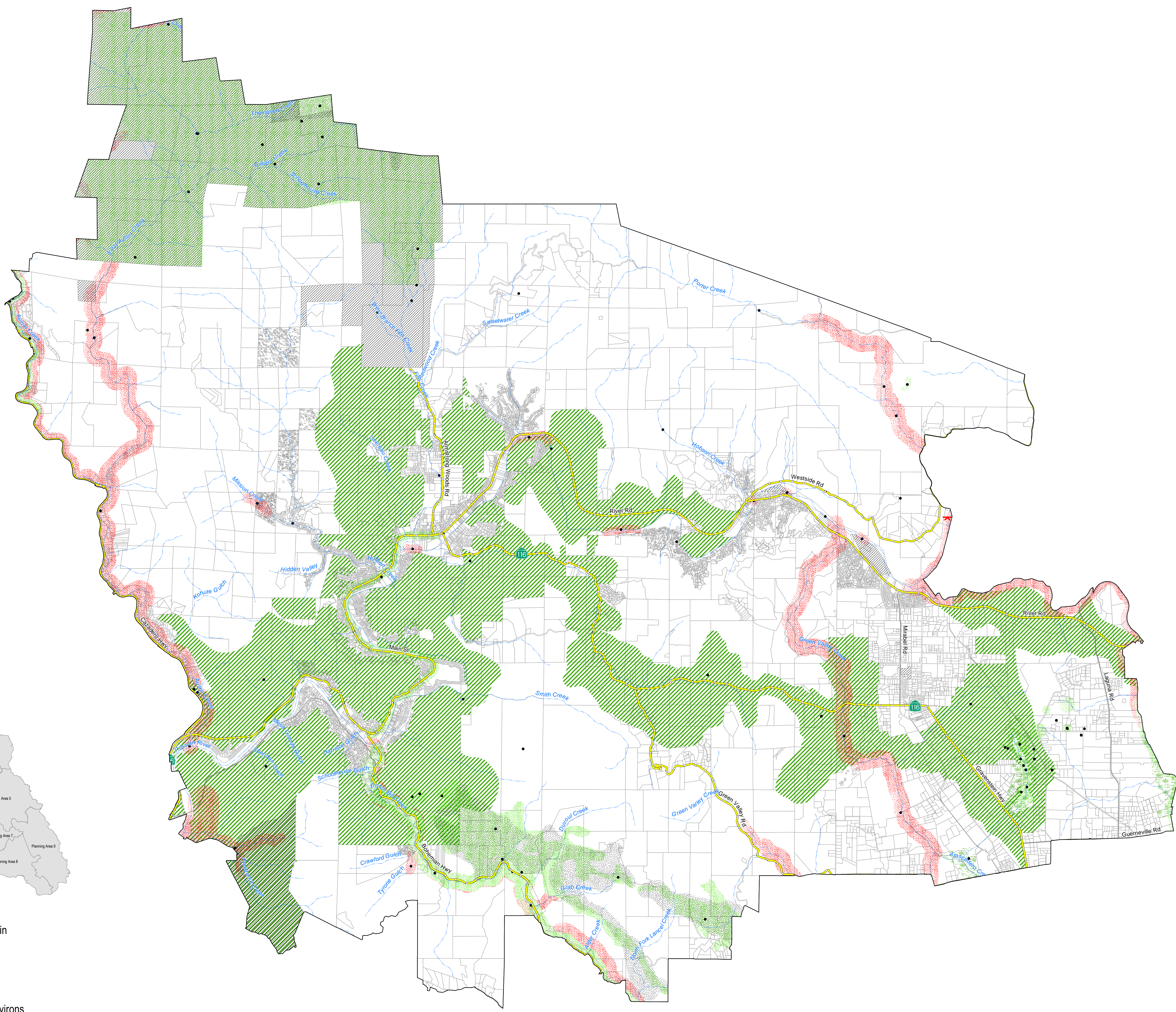


Figure OSRC-5d  
Open Space Map  
Russian River Area

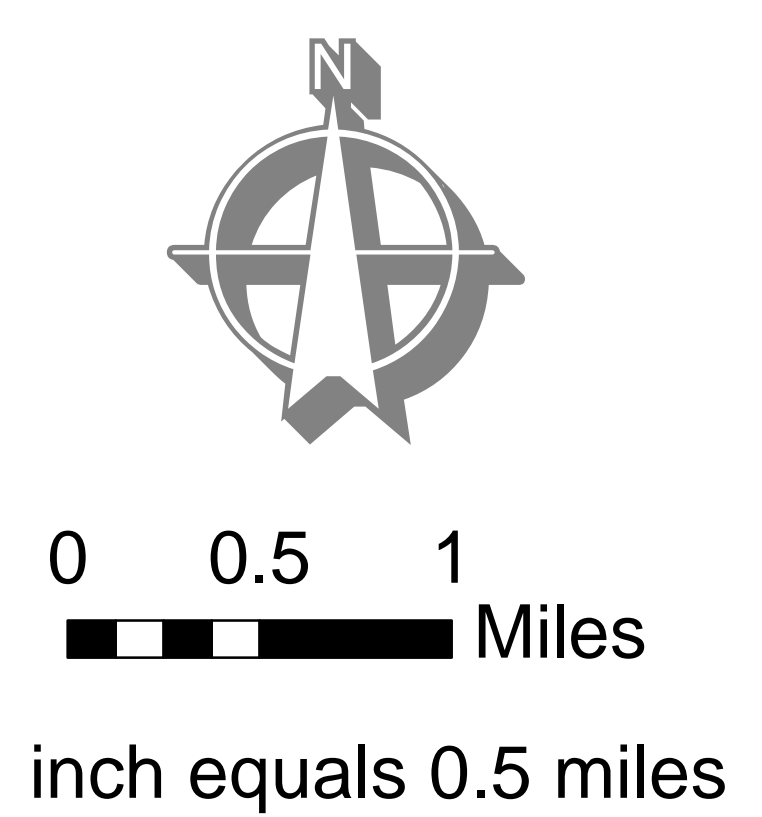


- Outdoor Recreation Areas**
- Planned Parks
  - Existing Parks
- Scenic Resources**
- Scenic Landscape Units
  - Scenic Corridors
- Biotic Resources**
- Riparian Corridors**
- Designated Streams
- Biotic Habitat Areas**
- Marshes and Wetlands
  - Sensitive Natural Communities
  - Special Status Species Habitat Occurrences of Special Status Species
  - Plant
  - Animal

- Base Map Data**
- Highways
  - Roads



- Planning Area 1 Sonoma Coast / Gualala Basin
- Planning Area 2 Cloverdale / N.E. County
- Planning Area 3 Healdsburg and Environs
- Planning Area 4 Russian River Area
- Planning Area 5 Santa Rosa and Environs
- Planning Area 6 Sebastopol and Environs
- Planning Area 7 Rohnert Park - Cotati and Environs
- Planning Area 8 Petaluma and Environs
- Planning Area 9 Sonoma Valley



**Note:**  
Map Scale and Reproduction methods limit precision in physical features displayed. This map is for illustrative purposes only, and is not suitable for parcel-specific decision making. The parcels contained herein are not intended to represent surveyed data. Site-specific studies are required to draw parcel-specific conclusions. Assessor's parcel data are current as of June 3, 2016. Includes General Plan Open Space amendments as of August 9, 2016. The California Department of Fish and Game California Natural Diversity Database (CNDDDB) is current as of June 7, 2016.

Copyright 2003 by the County of Sonoma, California. All rights reserved. No part of this map may be copied, reproduced, or transmitted in any form or by any means without written permission from the Permit and Resource Management Department (PRMD), County of Sonoma, California.

Sonoma County General Plan 2020  
Open Space & Resource Conservation Element

Permit and Resource Management Department  
2550 Ventura Avenue, Santa Rosa, California 95403  
707-565-1900 FAX 707-565-1103



Author: PRMD File: S:\GIS-DATA\PRMD\_BASE\PRMD Department Projects\Comprehensive Planning\General Plan 2020\GP Figure OSRC-5d E size.mxd Date: 08/09/2016