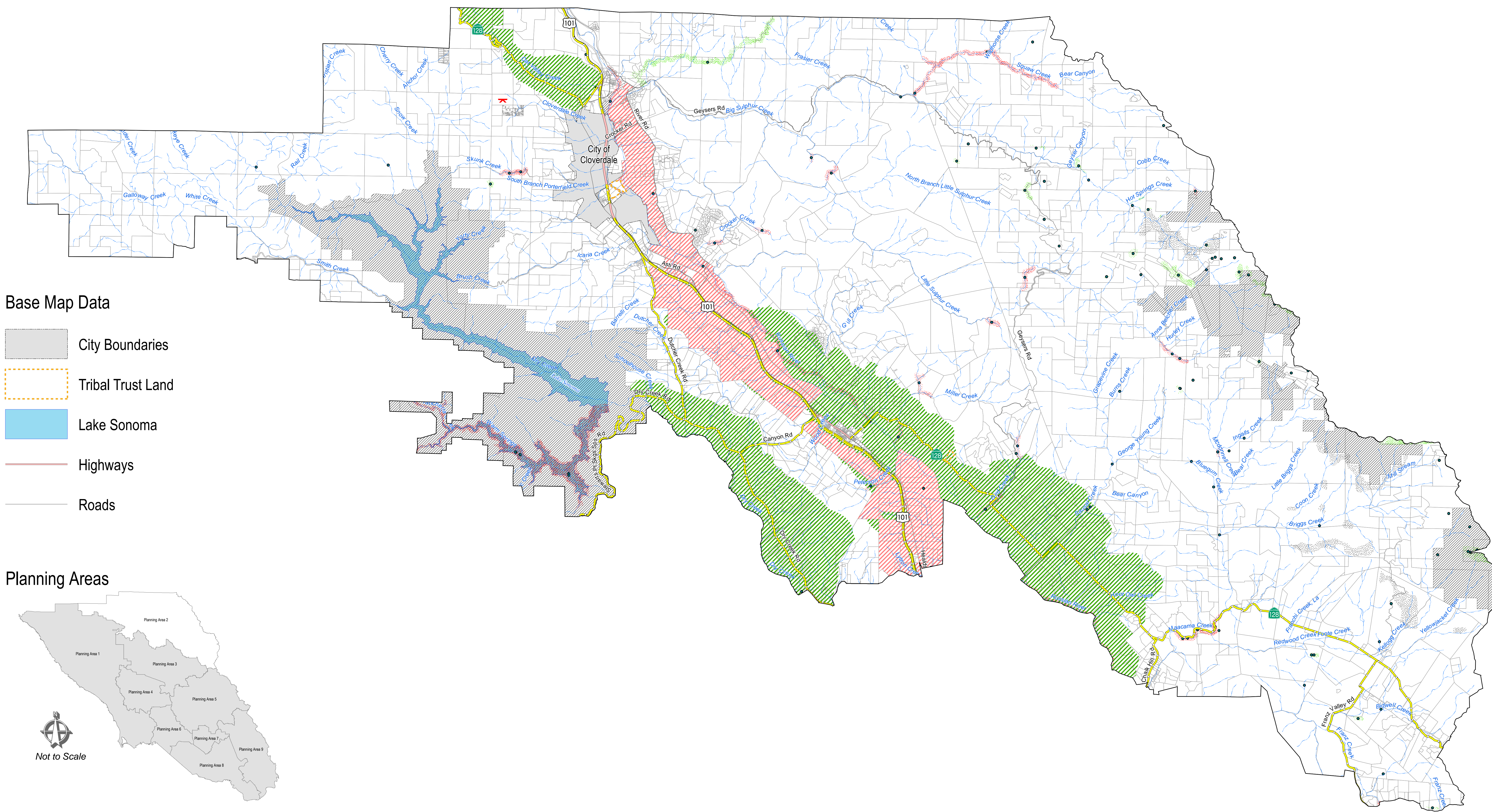


Figure OSRC-5b
 Open Space Map
 Cloverdale / N.E. County



Outdoor Recreation Areas

- Planned Parks
- Existing Parks

Scenic Resources

- Scenic Landscape Units
- Community Separators
- Scenic Corridors

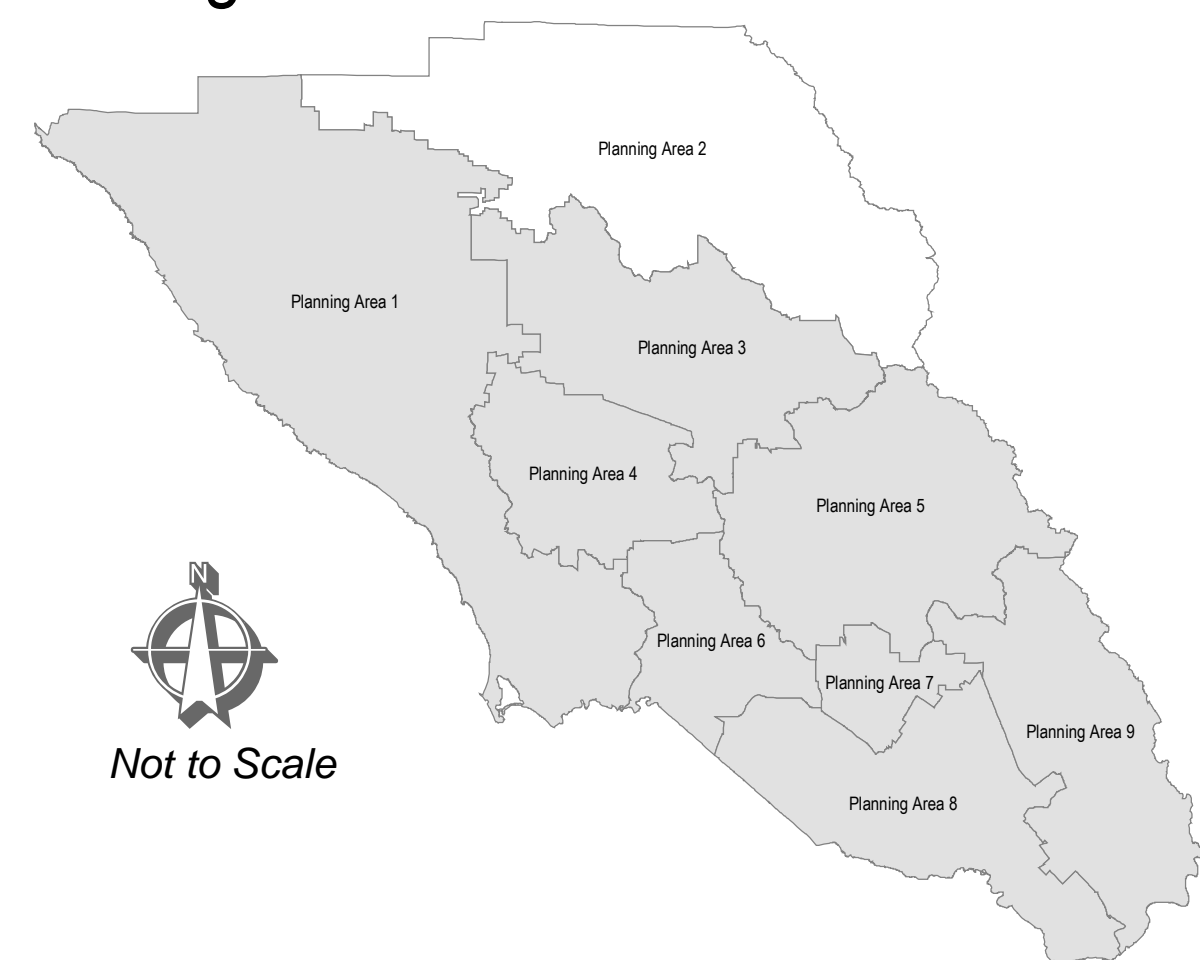
Biotic Resources

- Riparian Corridors
- Designated Streams
- Biotic Habitat Areas
- Sensitive Natural Communities
- Special Status Species Habitat Occurrences of Special Status Species
- Plant
- Animal

Base Map Data

- City Boundaries
- Tribal Trust Land
- Lake Sonoma
- Highways
- Roads

Planning Areas



Not to Scale

- Planning Area 1 Sonoma Coast / Gualala Basin
- Planning Area 2 Cloverdale / N.E. County
- Planning Area 3 Healdsburg and Environs
- Planning Area 4 Russian River Area
- Planning Area 5 Santa Rosa and Environs
- Planning Area 6 Sebastopol and Environs
- Planning Area 7 Rohnert Park - Cotati and Environs
- Planning Area 8 Petaluma and Environs
- Planning Area 9 Sonoma Valley

Note:
 Map Scale and Reproduction methods limit precision in physical features displayed. This map is for illustrative purposes only, and is not suitable for parcel-specific decision making. The parcels contained herein are not intended to represent surveyed data. Site-specific studies are required to draw parcel-specific conclusions. Assessor's parcel data are current as of June 3, 2016. Includes General Plan Open Space amendments as of August 9, 2016. The California Department of Fish and Game California Natural Diversity Database (CNDDDB) is current as of June 7, 2016.

Copyright 2003 by the County of Sonoma, California. All rights reserved. No part of this map may be copied, reproduced, or transmitted in any form or by any means without written permission from the Permit and Resource Management Department (PRMD), County of Sonoma, California.



0 1 2 Miles
 1 inch equals 1 miles

Sonoma County General Plan 2020
 Open Space & Resource Conservation Element

Permit and Resource Management Department
 2550 Ventura Avenue, Santa Rosa, California 95403
 707-565-1900 FAX 707-565-1103

