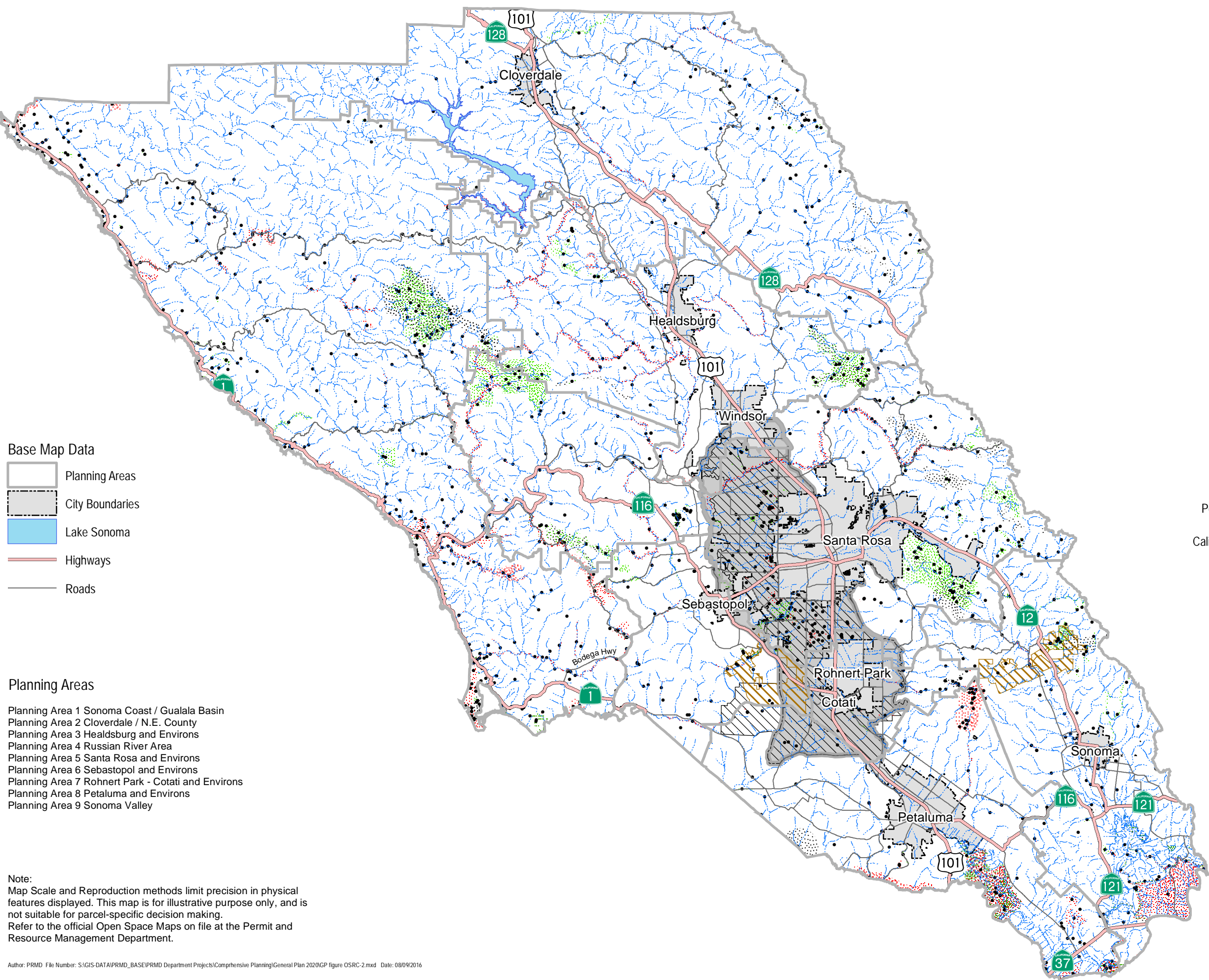


Figure OSRC-2
 Biotic Resource Areas



Base Map Data

- Planning Areas
- City Boundaries
- Lake Sonoma
- Highways
- Roads

Planning Areas

- Planning Area 1 Sonoma Coast / Gualala Basin
- Planning Area 2 Cloverdale / N.E. County
- Planning Area 3 Healdsburg and Environs
- Planning Area 4 Russian River Area
- Planning Area 5 Santa Rosa and Environs
- Planning Area 6 Sebastopol and Environs
- Planning Area 7 Rohnert Park - Cotati and Environs
- Planning Area 8 Petaluma and Environs
- Planning Area 9 Sonoma Valley

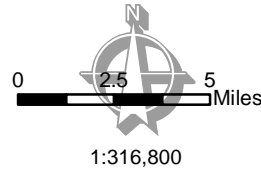
Note:
 Map Scale and Reproduction methods limit precision in physical features displayed. This map is for illustrative purpose only, and is not suitable for parcel-specific decision making. Refer to the official Open Space Maps on file at the Permit and Resource Management Department.

Riparian Corridors

- Designated Streams

Biotic Habitat Areas

- Marshes and Wetlands
- Sensitive Natural Communities
- Habitat Connectivity Corridors
- Special Status Species Habitat Occurrences
- Animal
- Plant
- Potential Range of California Tiger Salamander
- Calif. Tiger Salamander Critical Habitat - USFWS



**Sonoma County General Plan 2020
 Open Space & Resource
 Conservation Element**

Permit and Resource Management Department
 2550 Ventura Avenue, Santa Rosa, California 95403
 707-565-1900 FAX 707-565-1103

