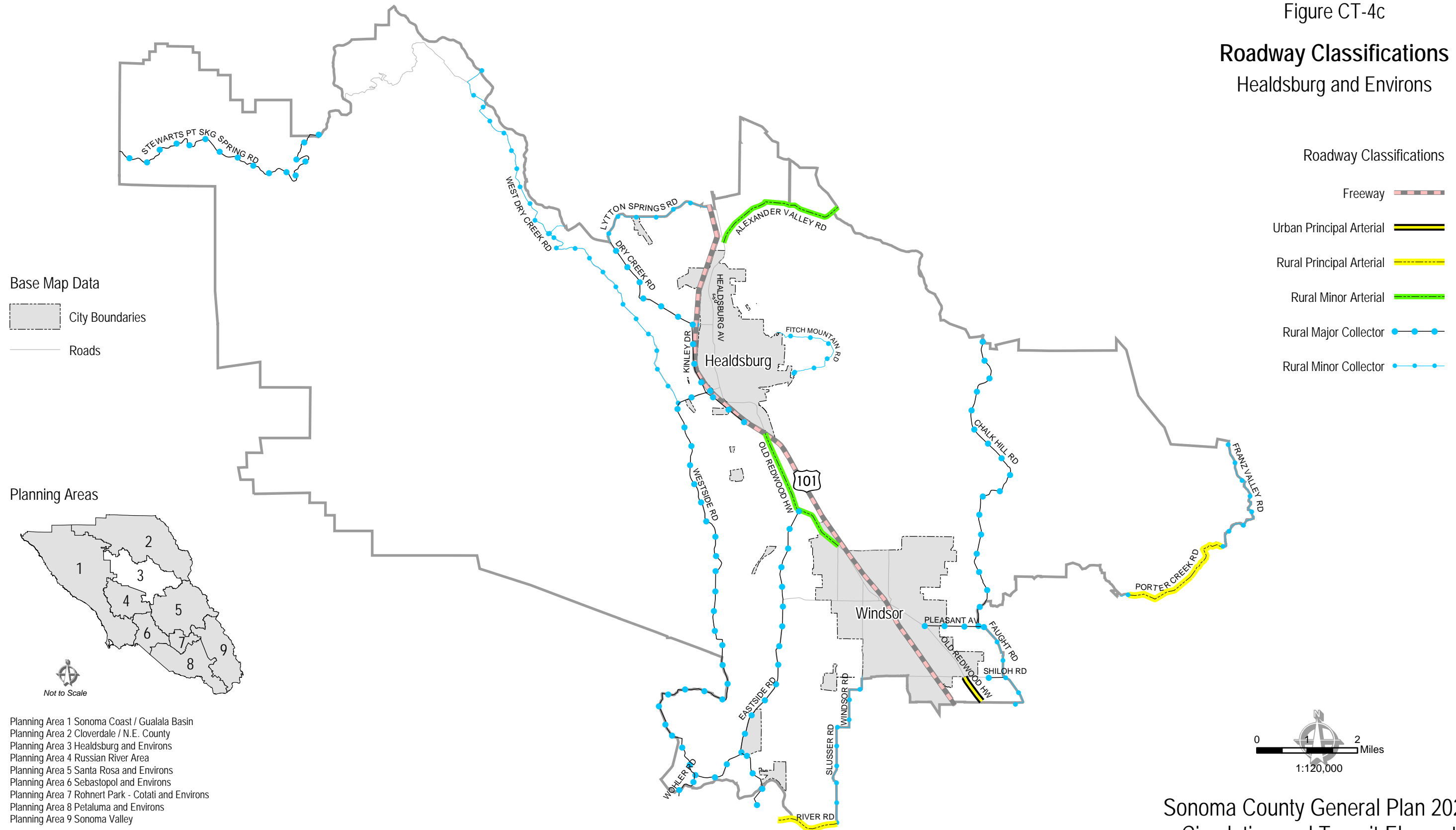


Figure CT-4c

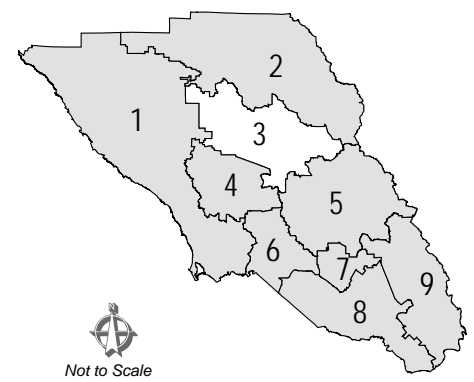
Roadway Classifications Healdsburg and Environs



Base Map Data

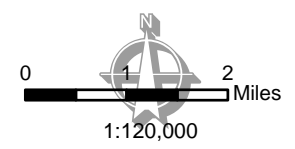
- City Boundaries
- Roads

Planning Areas



- Planning Area 1 Sonoma Coast / Gualala Basin
- Planning Area 2 Cloverdale / N.E. County
- Planning Area 3 Healdsburg and Environs
- Planning Area 4 Russian River Area
- Planning Area 5 Santa Rosa and Environs
- Planning Area 6 Sebastopol and Environs
- Planning Area 7 Rohnert Park - Cotati and Environs
- Planning Area 8 Petaluma and Environs
- Planning Area 9 Sonoma Valley

- Roadway Classifications**
- Freeway
 - Urban Principal Arterial
 - Rural Principal Arterial
 - Rural Minor Arterial
 - Rural Major Collector
 - Rural Minor Collector



Sonoma County General Plan 2020 Circulation and Transit Element

Permit and Resource Management Department
2550 Ventura Avenue, Santa Rosa, California 95403
707-565-1900 FAX 707-565-1103



Note:
Map Scale and Reproduction methods limit precision in physical features displayed. This map is for illustrative purpose only.

Author: PRMD N. Najarian Date: 09/23/2008
File Number: S:\GIS-DATA\PRMD_BASE\PRMD Department Projects\Comprehensive Planning\General Plan 2020\GP figure CT-4c.mxd