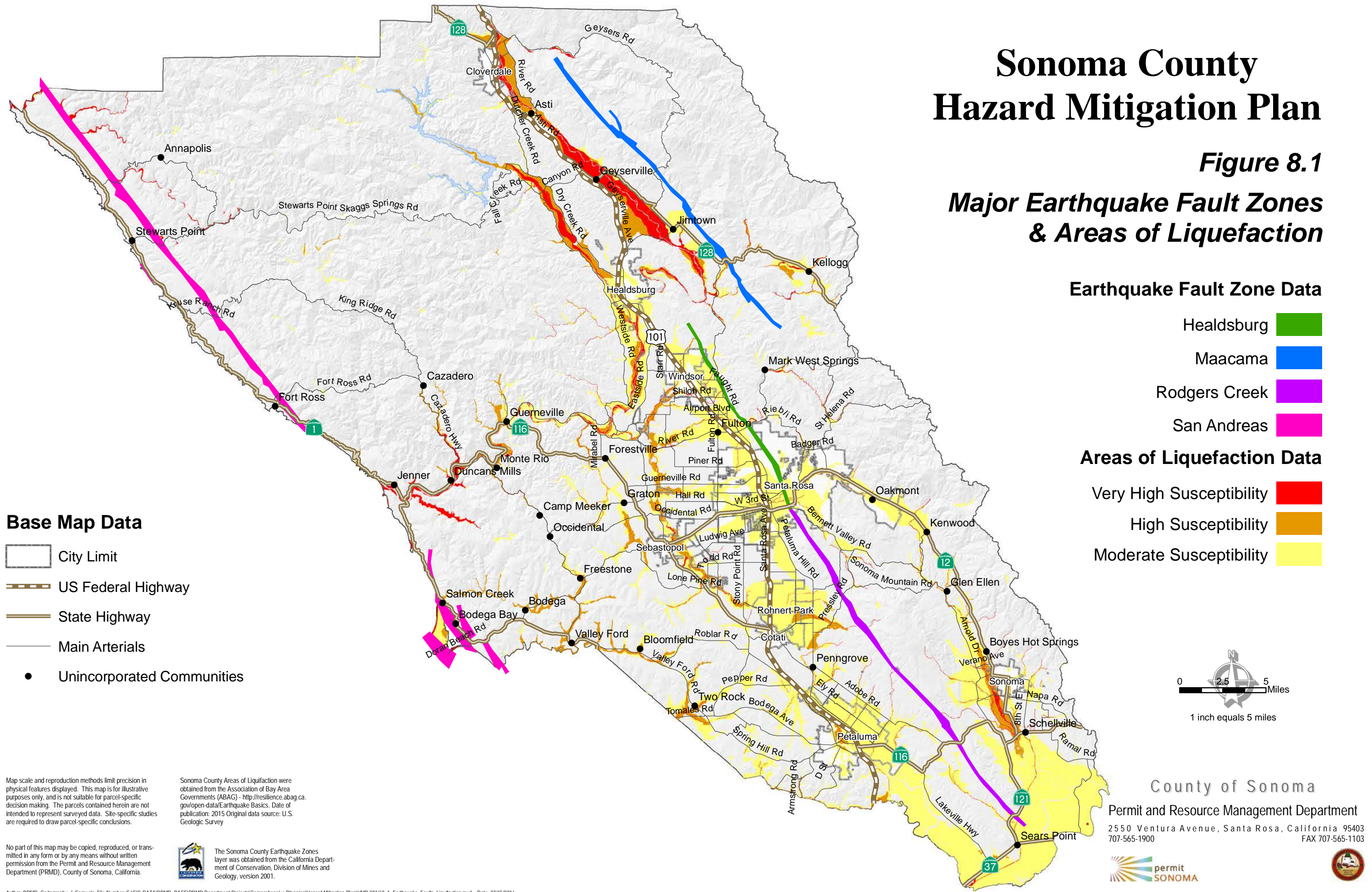


# Sonoma County Hazard Mitigation Plan

**Figure 8.1**  
**Major Earthquake Fault Zones & Areas of Liquefaction**



**Base Map Data**

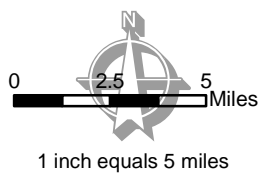
- City Limit
- US Federal Highway
- State Highway
- Main Arterials
- Unincorporated Communities

**Earthquake Fault Zone Data**

- Healdsburg
- Maacama
- Rodgers Creek
- San Andreas

**Areas of Liquefaction Data**

- Very High Susceptibility
- High Susceptibility
- Moderate Susceptibility



Map scale and reproduction methods limit precision in physical features displayed. This map is for illustrative purposes only, and is not suitable for parcel-specific decision making. The parcels contained herein are not intended to represent surveyed data. Site-specific studies are required to draw parcel-specific conclusions.

Sonoma County Areas of Liquefaction were obtained from the Association of Bay Area Governments (ABAG) - <http://resilience.abag.ca.gov/open-data/Earthquake-Basics>. Date of publication: 2015 Original data source: U.S. Geologic Survey

No part of this map may be copied, reproduced, or transmitted in any form or by any means without written permission from the Permit and Resource Management Department (PRMD), County of Sonoma, California.

The Sonoma County Earthquake Zones layer was obtained from the California Department of Conservation, Division of Mines and Geology, version 2001.

County of Sonoma  
Permit and Resource Management Department  
2550 Ventura Avenue, Santa Rosa, California 95403  
707-565-1900 FAX 707-565-1103