

PLP22-0027; Canyon Rock Asphalt Facility Project

Scoping Meeting

August 21, 2023

6:00 PM



Agenda

- Introduce Project Staff and Applicant
- CEQA Overview and Process
- Project Description
- EIR Process
- Public Comment

Project Staff and Applicant

- Permit Sonoma Staff:
 - ▣ Robert Aguero, Senior Environmental Specialist
 - 707-565-3718 or Robert.Aguero@sonoma-county.org
- Project Applicant:
 - ▣ Canyon Rock Quarry
 - ▣ Consultant – Benchmark Resources

California Environmental Quality Act (CEQA)

- Permit Sonoma is the CEQA Lead Agency for the proposed project.
- Permit Sonoma is Sonoma County's consolidated land use planning and development permitting agency. Virtually any land development or construction that takes place in the unincorporated area of Sonoma County (outside the nine incorporated cities) is reviewed, permitted, and inspected by Permit Sonoma.

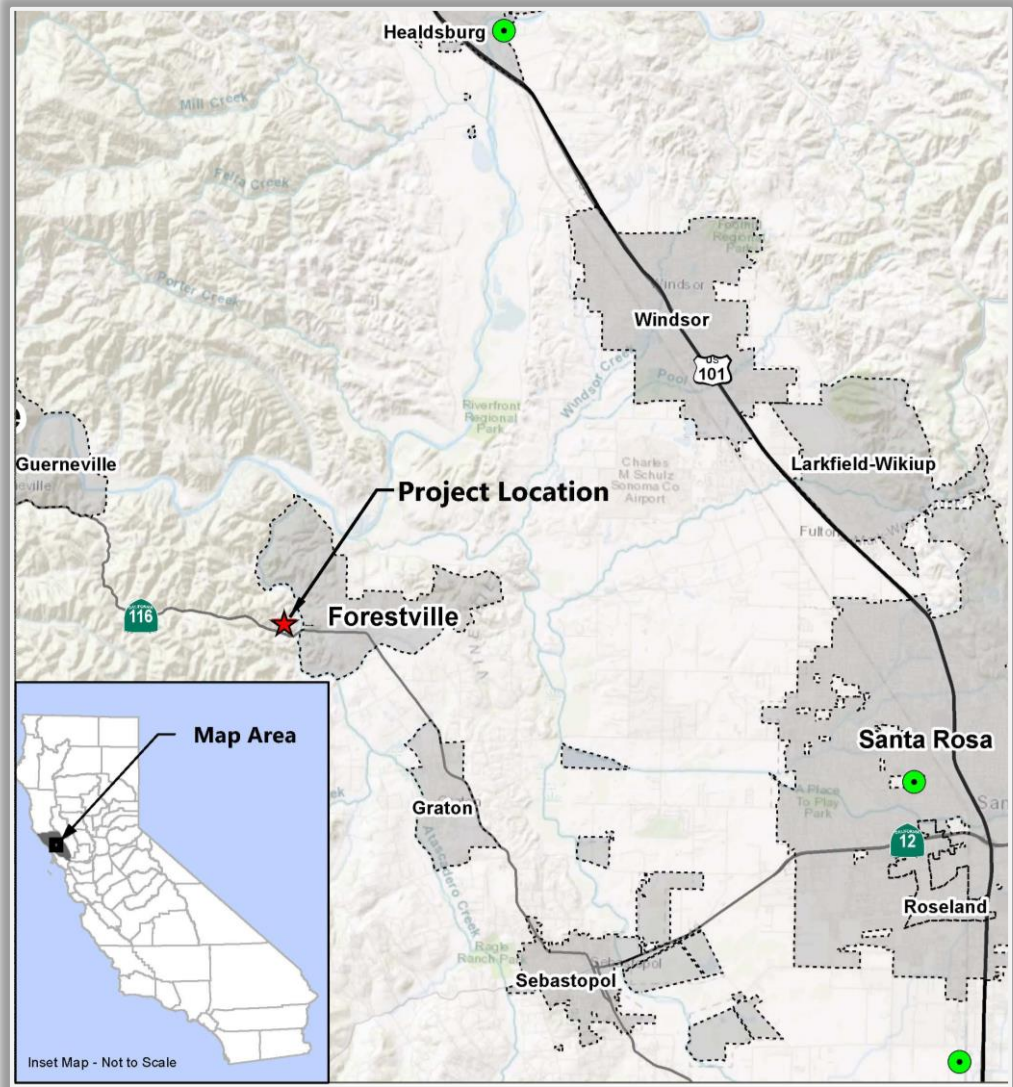
Purpose of CEQA

- **INFORM** decision makers and the public of the potential environmental effects of the project
- **ENGAGE** the public in the environmental review process
- **DISCLOSE** potential project impacts on the environment
- **AVOID OR REDUCE** potential impacts of the project by implementing mitigation measures and/or project alternatives

Project Overview

- Canyon Rock Company plans to add an asphalt facility to its quarry near Forestville
- Proposed asphalt facility would be a local source of asphalt for western Sonoma County
- No change to the existing export limits (562,500 cubic yards annually) in the current use permit
- All asphalt exports (up to 150,000 cubic yards annually) would remain subject to existing cap on exports
- Elimination of trips carrying aggregate to off-site satellite asphalt plants has potential to reduce regional truck traffic
- The facility would use the best available modern technology to control emissions

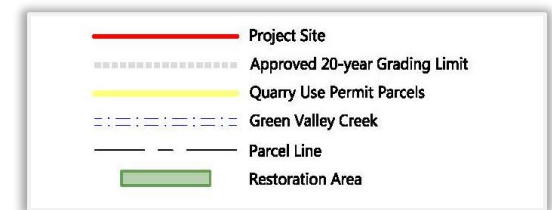
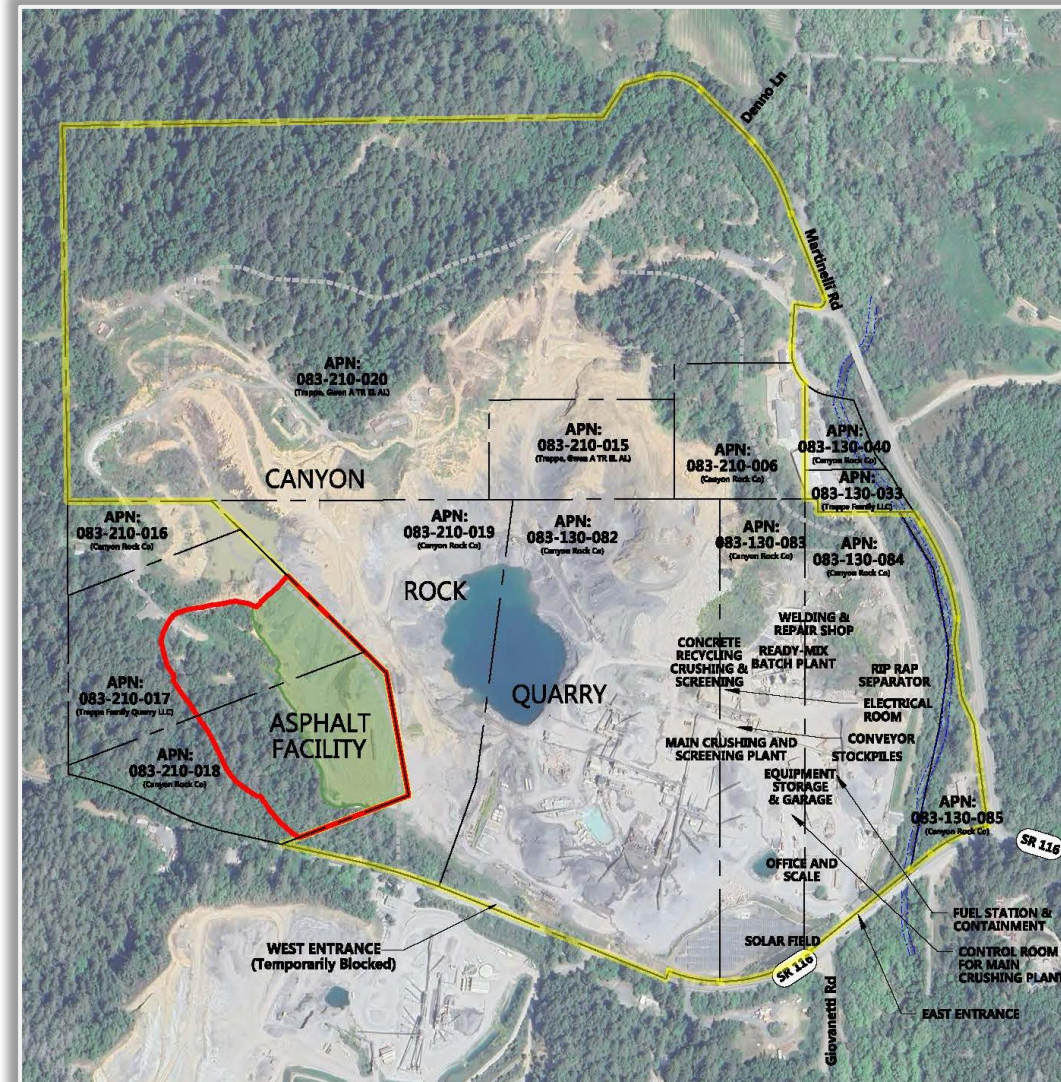
Regional Location Map



Project Objectives

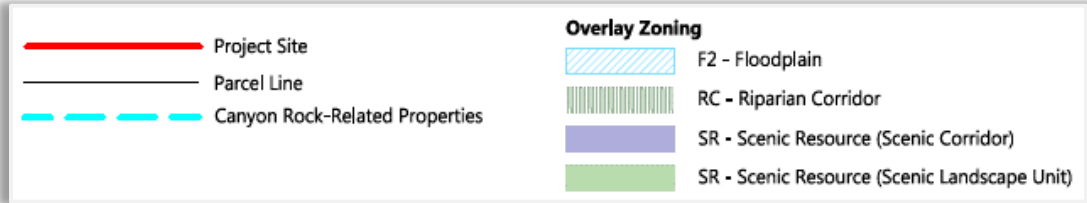
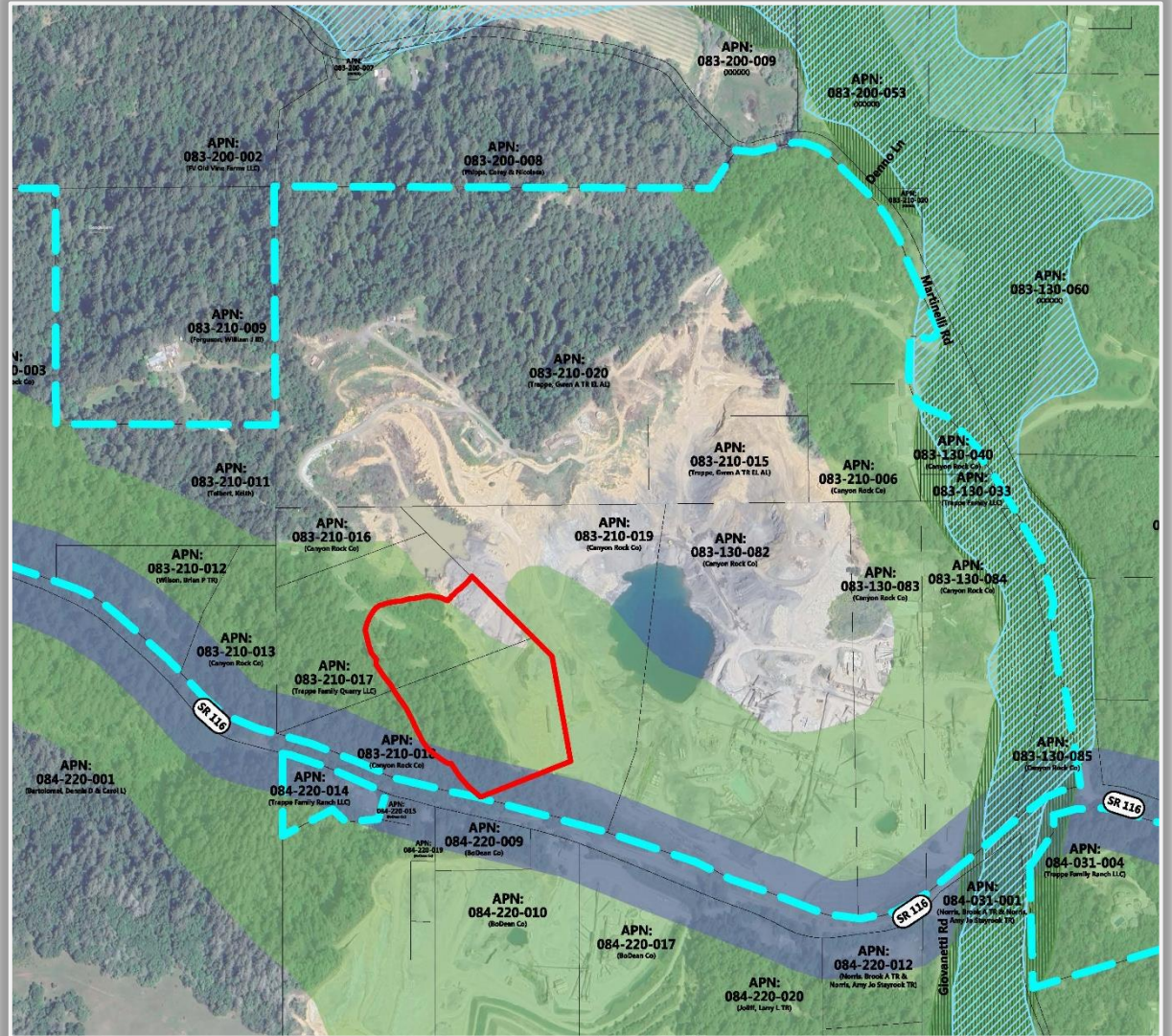
- Economically produce quality asphalt to meet local construction, essential roadway infrastructure, and maintenance needs in Sonoma County;
- Place an asphalt source where none currently exists proximal to areas of demand in western Sonoma County, thus minimizing regional air emissions, greenhouse gas emissions, traffic impacts and vehicles miles traveled;
- Co-locate a modern asphalt facility at the Forestville Quarry, thereby reducing time and costs due to duplicative trucking now supplying aggregate materials to distant asphalt plants;
- Develop an asphalt facility that is consistent with Scenic Resources (SR) Combining District requirements to protect the visual quality of public views of the site from SR 116; and
- Introduce Best Available Control Technology for the reduction of emissions as compared to the emissions currently being generated by older asphalt facilities and associated technology.

Project Location Map



Zoning

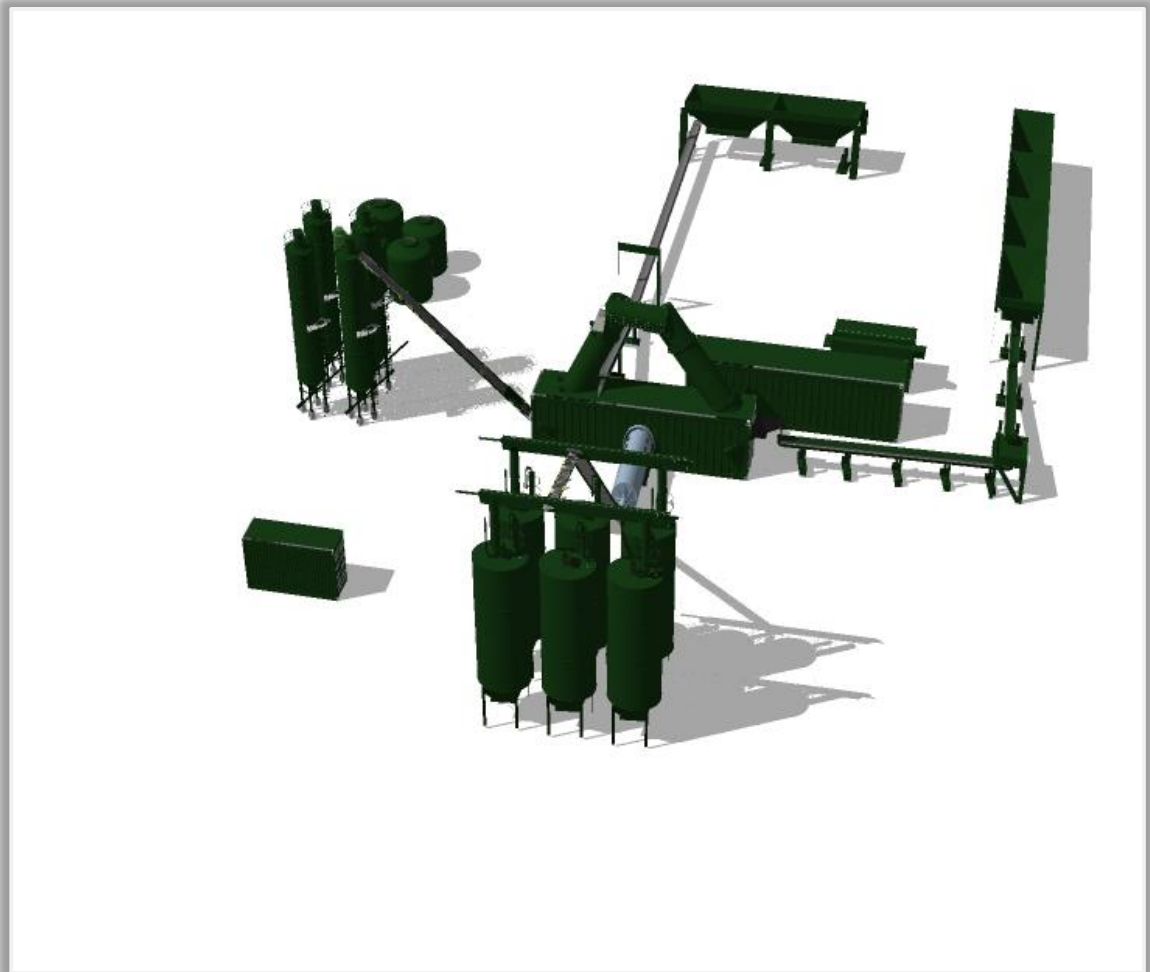
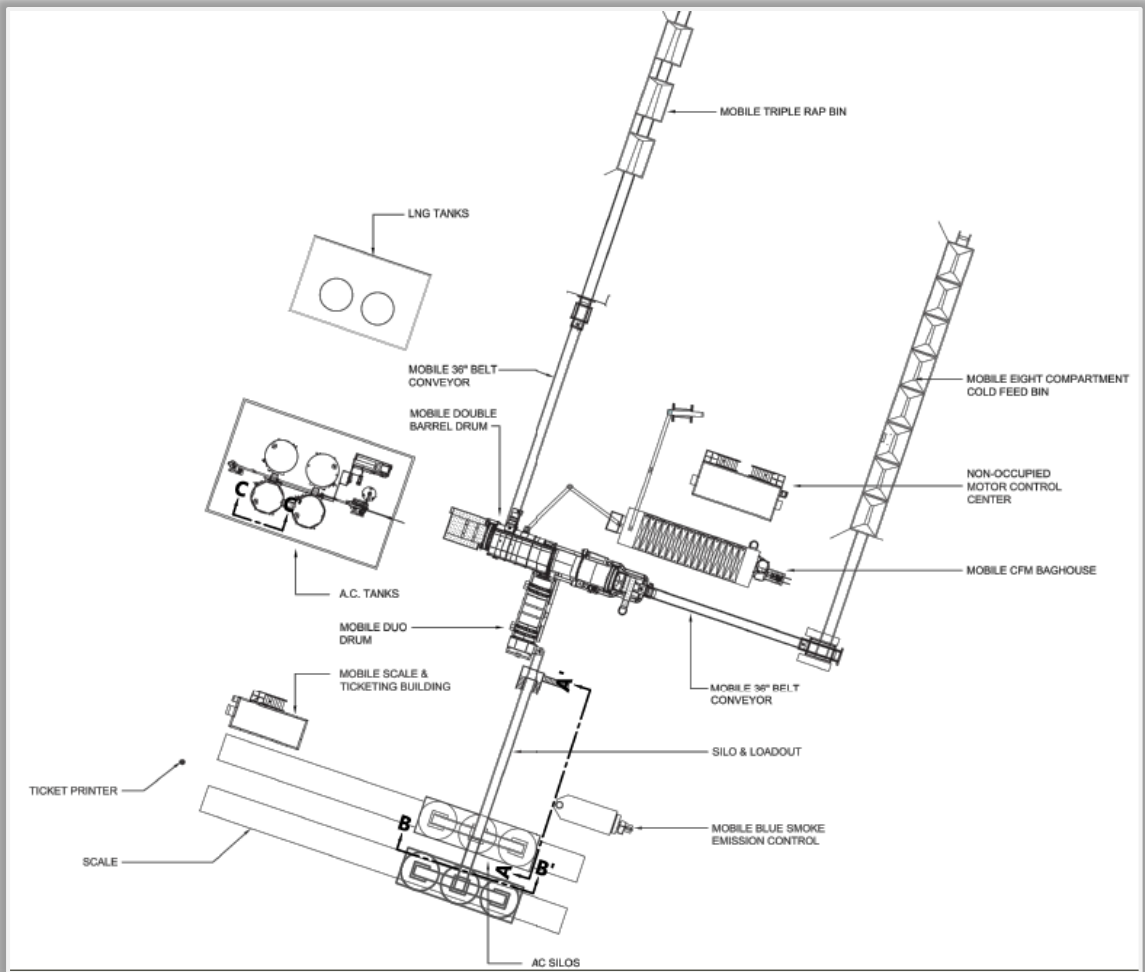
- Project site is zoned Resources and Rural Development (RRD), which allows mining and ancillary uses with approval of a Use Permit and Mineral Resource (MR) Combining District zoning
- Project site is within Scenic Resource (SR) overlay zones



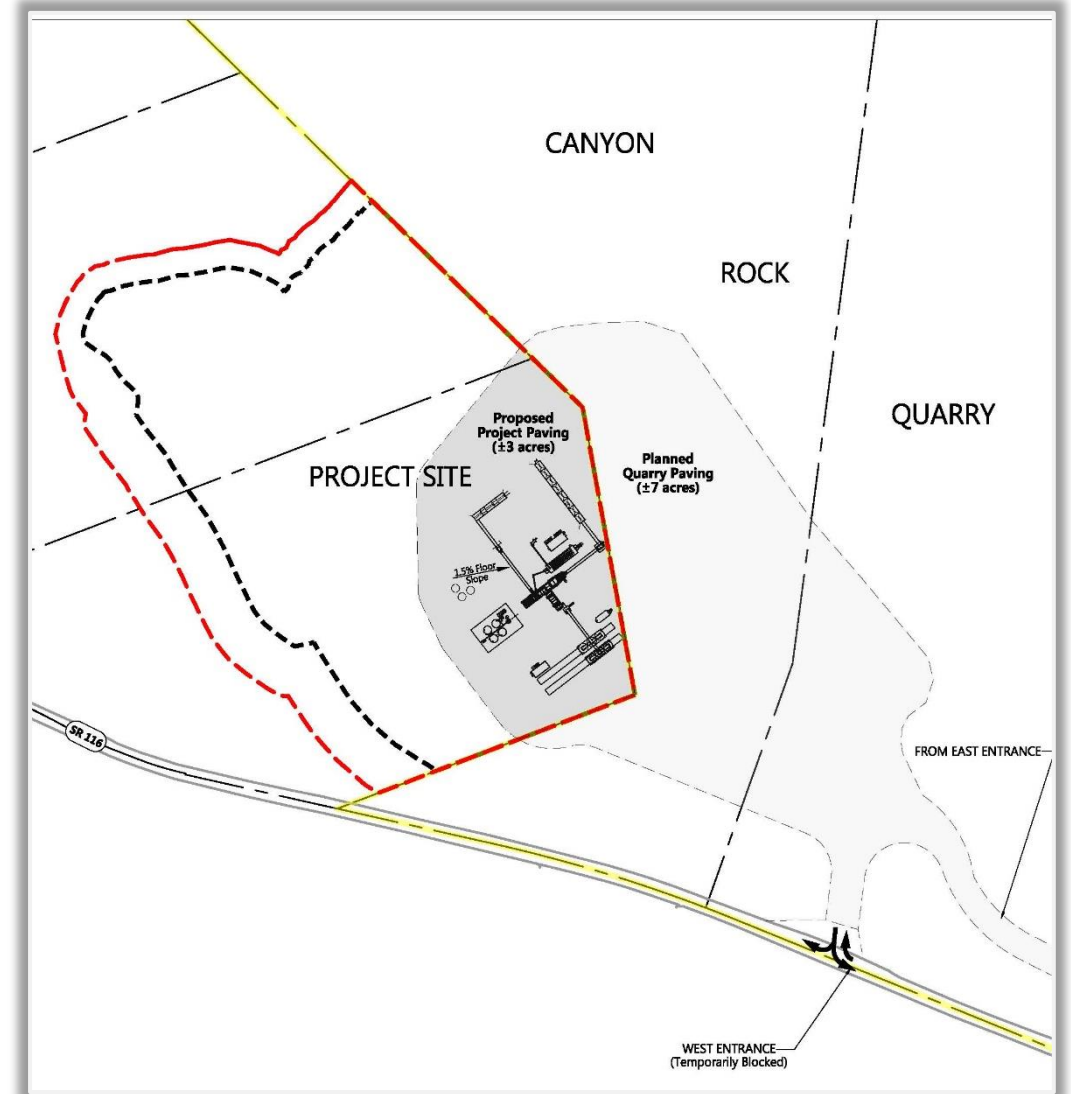
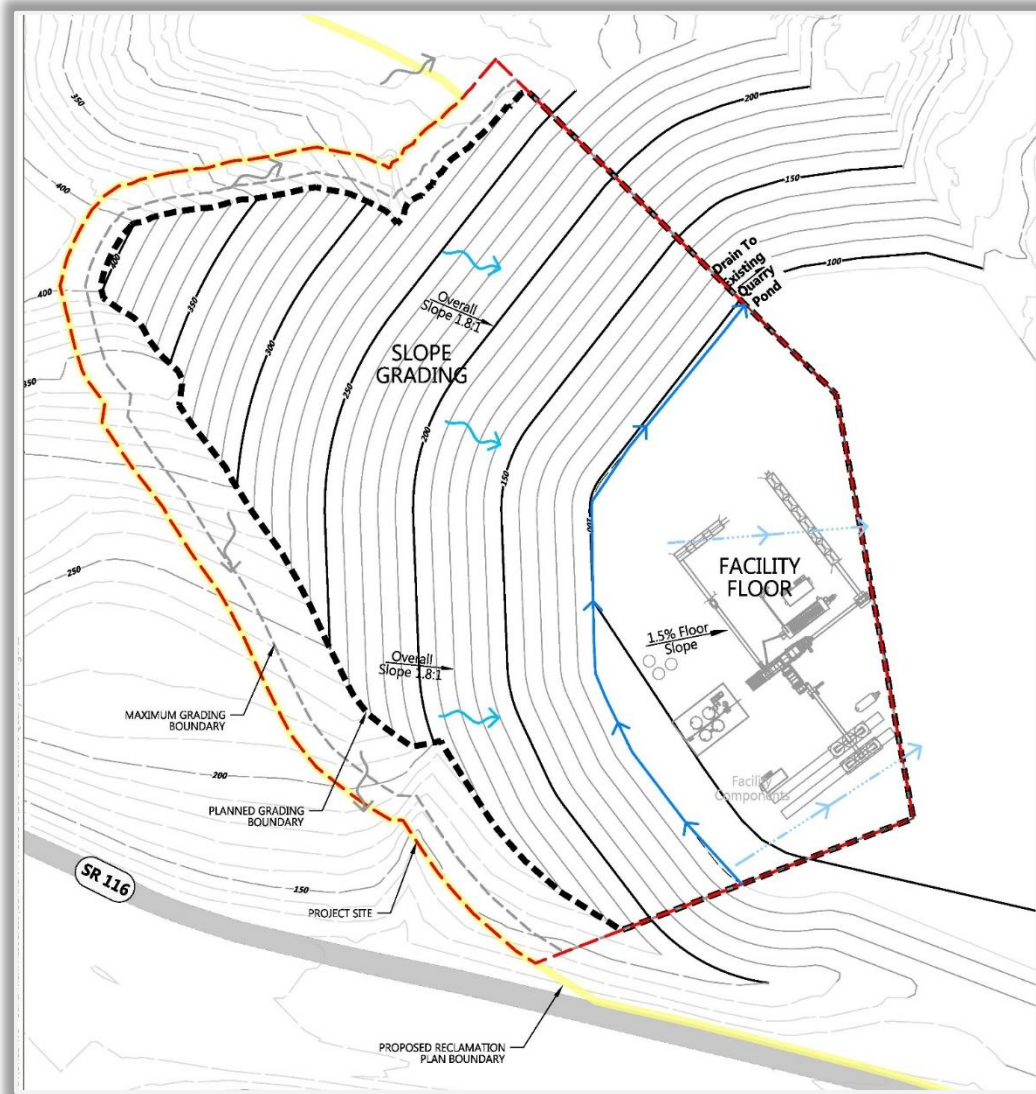
What is an Asphalt Plant?

- An asphalt plant is a mixing facility where the following materials are brought together, blended, and heated:
 - ▣ Aggregate (95% by weight)
 - ▣ Asphalt cement “glue” (5% by weight)
 - ▣ Additives (optional)
- Asphalt cement is a petroleum substance that is liquid at high temperatures and becomes a solid as it cools.
- Asphalt plants do not produce asphalt cement, they store and use it.

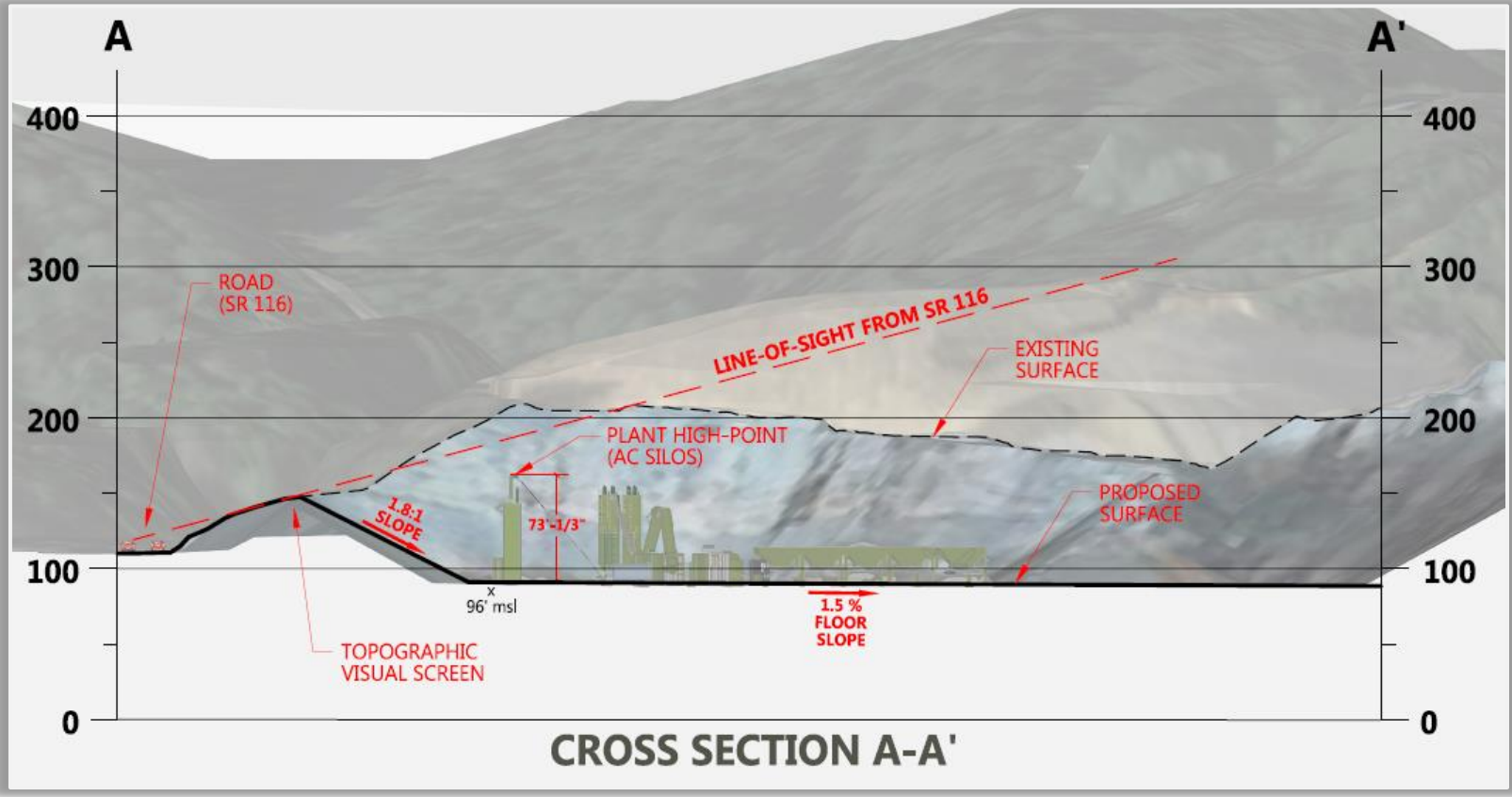
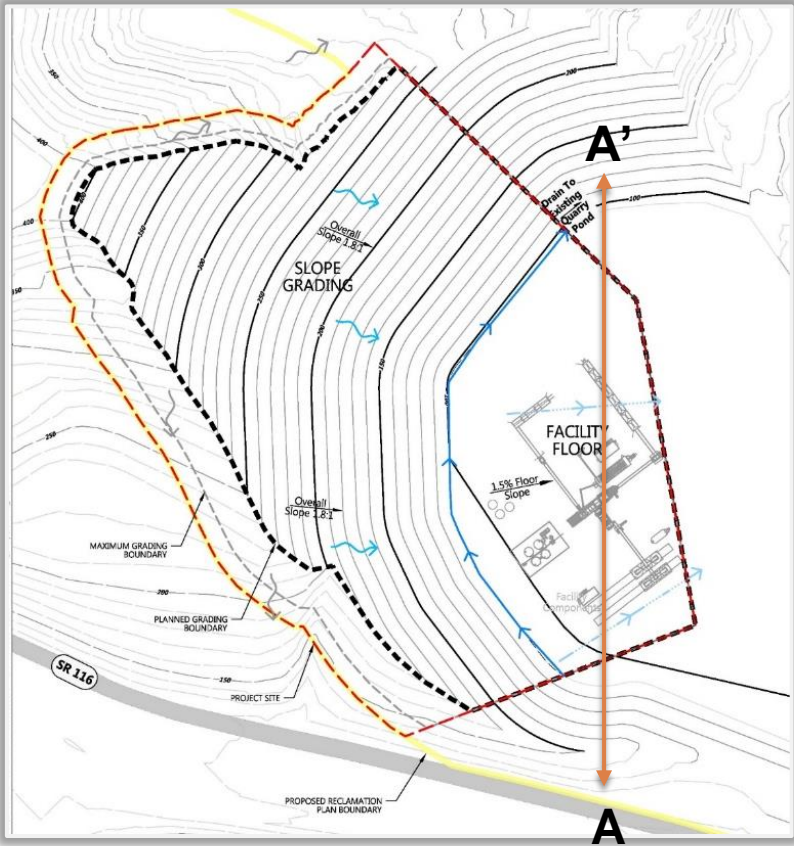
Asphalt Facility Conceptual Layout



Project Site Grading and Conceptual Layout



Visual Screening Concept



Project Operations

- The asphalt facility would operate within the existing hours of operation specified under Use Permit PLP97-0046 (6 am to 10 pm weekdays and 6 am to 4:30 pm Saturdays)
- Similar to existing operations, the asphalt facility could operate for extended hours to accommodate nighttime construction projects, provided that Canyon Rock provides advance notification
- Heated silos would minimize use of the highest noise generating components of the asphalt facility (drum/burner/baghouse)

Asphalt Plant Utilities and Raw Material Needs

- Aggregate would be provided from existing quarry
- Import of asphalt cement and liquified natural gas
- Asphalt facility power would be electric, with the drum drier powered by liquified natural gas
- Limited water needs (water used by street sweeper, water misters on conveyors to control dust, some water may be used as additive)

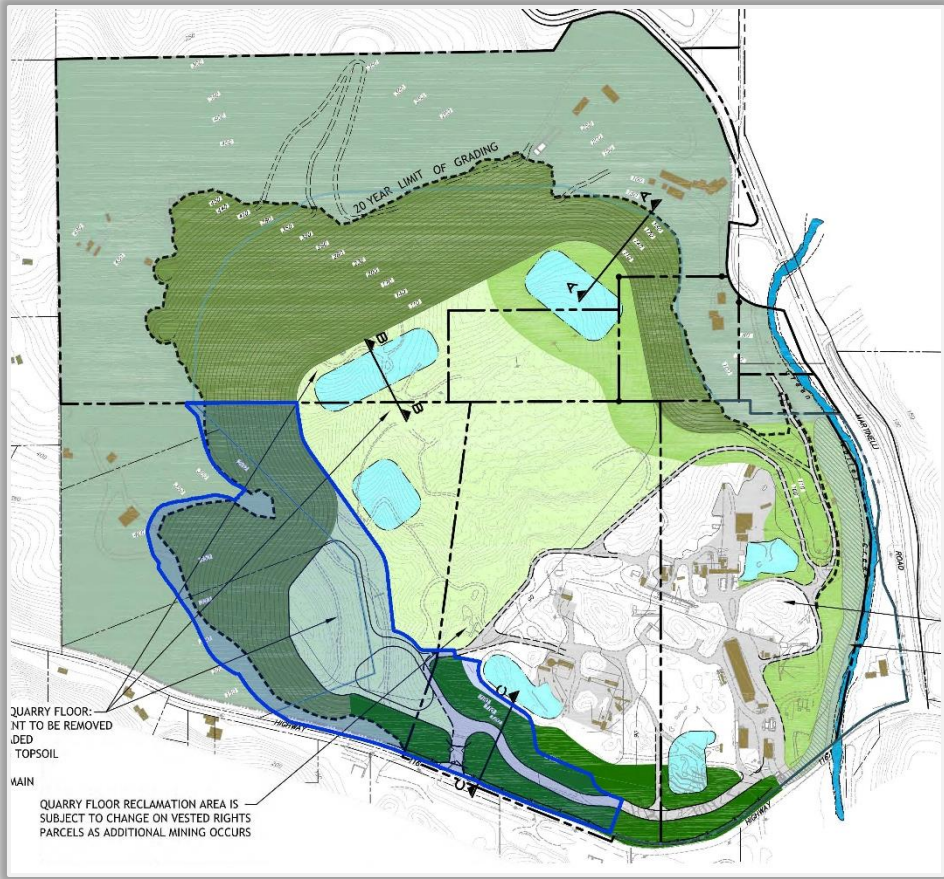
Best Available Control Technology

- Baghouse
 - ▣ A baghouse is a large air filtering device that removes particulate matter from the air. The particulate collected by the baghouse is removed and recycled back into the asphalt mix
- Blue smoke capture system
 - ▣ Blue smoke is caused by hydrocarbons from the asphalt condensing in the cool ambient air
 - ▣ Blue smoke capture system consists of a network of ductwork and collection points designed to capture blue smoke from under and on top of the heated silos

Other Technology

- Heated silos
 - ▣ Minimize need for nighttime operations
- Conveyors instead of trucks
 - ▣ Avoids diesel emissions
- Recycled Asphalt Product (RAP)
 - ▣ Both aggregate and asphalt cement can be reused, reducing the amount of newly-mined aggregates required for the production and reducing the need for newly produced asphalt cement.

Reclamation Plan Amendment



Purpose of EIR

- EIRs are required for projects that may have one or more significant environmental impacts
- Identify potential physical environmental impacts of the project
- Inform the public and public agency decision-makers prior to project approval/disapproval
- Recommend mitigation measures to reduce significant effects
- Consider project alternatives that may reduce potential impacts

Purpose of EIR

The EIR will describe the reasonably foreseeable and potentially significant adverse effects of the Project (both direct and indirect). Each of the following CEQA environmental topics may be addressed in the EIR, including:

- Aesthetics/Visual
- Agricultural and Forestry Resources
- Air Quality
- Biological Resources
- Cultural Resources
- Energy
- Geology/Soils
- GHG Emissions
- Hazards and Hazardous Materials
- Hydrology and Water Quality
- Land Use and Planning
- Mineral Resources
- Noise
- Population/Housing
- Public Services
- Recreation
- Transportation
- Tribal Cultural Resources
- Utilities and Service Systems
- Wildfire
- Cumulative Effects

Permits and Entitlements

- Project would require:
 - ▣ County approval of a conditional use permit
 - ▣ County approval of zone change
 - ▣ County approval of amendment to reclamation plan
 - ▣ Grading/building/encroachment permits
- EIR will list additional permits that may be needed from Federal, State, and Regional Agencies

EIR Public Scoping Comments

- Focus comments on environmental topics:
 - ▣ Significant environmental concerns
 - ▣ Information that would help analysis
 - ▣ Methods and level of analysis
 - ▣ Measures to avoid or reduce environmental impacts
 - ▣ Reasonable project alternatives

How to Submit Comments

Verbal Comments at this meeting:

COMMENT INSTRUCTIONS:

To raise and lower your hand:

App

Locate the Raise Hand feature

Keyboard

Press the Alt & Y keys together

By Phone

Press *9

Written Comments after this meeting:

You may submit written comments by

September 21, 2023, at 5pm

To Robert Aguero at;

Robert.Aguero@sonoma-county.org

or

Robert Aguero

County of Sonoma

Permit Sonoma

2550 Ventura Avenue

Santa Rosa, CA 95403