

# Groundwater Monitoring, Permit Sonoma

**By Robert Pennington**

Permit Sonoma Staff Geologist

October, 2023



# Sonoma County Groundwater Monitoring Policy

## 8-1-3 Groundwater Monitoring Guidelines for Water Wells

- Metering and monitoring required of:
  - Commercial and industrial discretionary projects
  - Cannabis projects
  - Well permits for non-residential uses (permit applied for after October 4, 2022)
- Metering, monitoring, and reporting completed by operator through online self inspection form. Link to online form emailed each December.
- County staff conduct occasional site visits for validation.

Questions: [PermitSonoma-WRM@sonoma-county.org](mailto:PermitSonoma-WRM@sonoma-county.org)

# Typical Metering and Monitoring Frequency

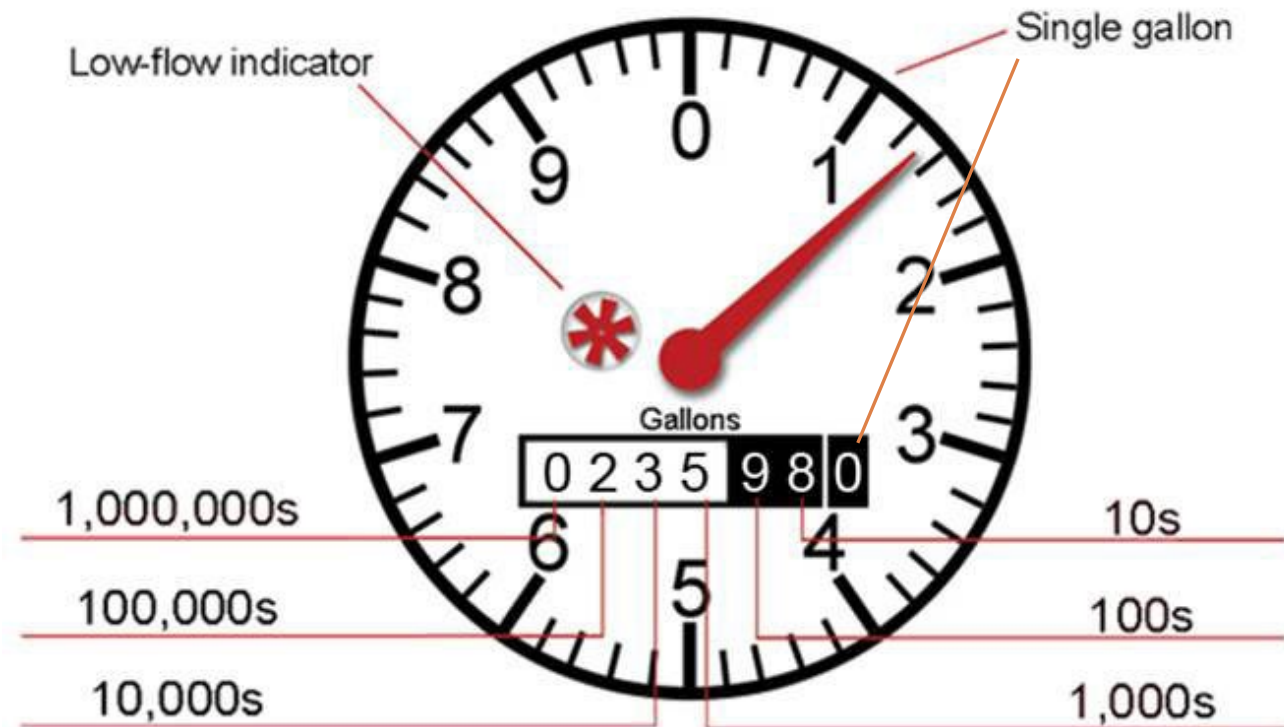
PERMIT TYPE	VERY LOW USE (0 – 0.5 AFY)	LOW USE (0.5 – 2 AFY)	MODERATE USE (2 – 5 AFY)	HIGH USE (5 – 10 AFY)
<b>Well Permit – Residential</b>	None	None	Monthly water meter readings	Monthly water meter readings and groundwater levels
<b>Well Permit – Nonresidential</b>	Monthly water meter readings	Monthly water meter readings	Monthly water meter readings	Monthly water meter readings and groundwater levels
<b>Use Permit</b>	Annual water meter readings ***	Quarterly water meter and groundwater levels ***	Quarterly water meter and groundwater levels ***	Monthly water meter readings and groundwater levels within a dedicated monitoring well ***
<b>Cannabis Permit</b>	Quarterly water meter and groundwater levels ***	Quarterly water meter and groundwater levels ***	Quarterly water meter and groundwater levels ***	Monthly water meter readings and groundwater levels within a dedicated monitoring well ***

\*\*\* Requirements vary and depend on specific permit terms

AFY = Acre feet per year

# Water Use Metering

- Operator records meter readings monthly, quarterly, or annually (as required)
  - Preferred units are **gallons**
  - Photo of meter at end of the year
  - Operator submits using the self inspection form at the end of the year.
- 
- [See Appendix A: 8-1-3 Groundwater Monitoring Guidelines for Water Wells](#)



# Static Water Level

- Turn off well pump
- Wait for water level to recover (recommend waiting 12 hours)
- Measure the “Depth to Water” from the top of the well to the static water level
  - Most common method - Electric Water Level Probe (Electric Tape). Electric Tapes are essentially a long tape measure with a probe attached to the end. When the probe contacts water, a light or beeping noise turns on. When the probe signals, you read the distance measurement off the tape at the top of the well. This measurement is the “Depth to Water”.
  - For deep wells or small diameter wells, other methods may be required.
  - Permanent sensors may be preferred (contact a well contractor).
- [DWR Groundwater Elevation Monitoring Guidelines](#)
- [Video for Measuring Water Level with Electric Tape](#)

