

NATIONAL POLLUTANT DISCHARGE ELIMINATION SYSTEM (NPDES)

Intent of Use

The Phase 1 Term 4 National Pollutant Discharge Elimination System (NPDES) MS4 Boundary is a delineation of the USGS 10-Digit HUC West Creek Watershed boundary encompassing the perimeter of the Laguna de Santa Rosa Watershed, the State of California Regional Water Quality Control Board's RB1 (North Coast Region) and RB2 (San Francisco Bay Region) interior boundary, General Plan 2020 Urban Service Areas (Forestville, Graton, Guerneville, Healdsburg, Occidental, and Monte Rio), and City Limits of Cloverdale and Sebastopol. All these boundaries integrate into the perimeter of the boundary to complete the total area considered Phase 1 Term 4 NPDES boundary.

The boundary will be used to determine areas subject to special NPDES storm water requirements to improve water quality. In particular this boundary will assist in determining where low impact development post construction best management practices (LID/BMPs) are required to improve water quality. In addition, the map is a requirement of the North Coast Region Water Quality Control Board, Santa Rosa, in order for the County of Sonoma to reapply for coverage to discharge storm water from local Municipal Separate Storm Sewer System (MS4) into waters of the state as part of the NPDES Phase 1 Term 4 permit renewal.

Background

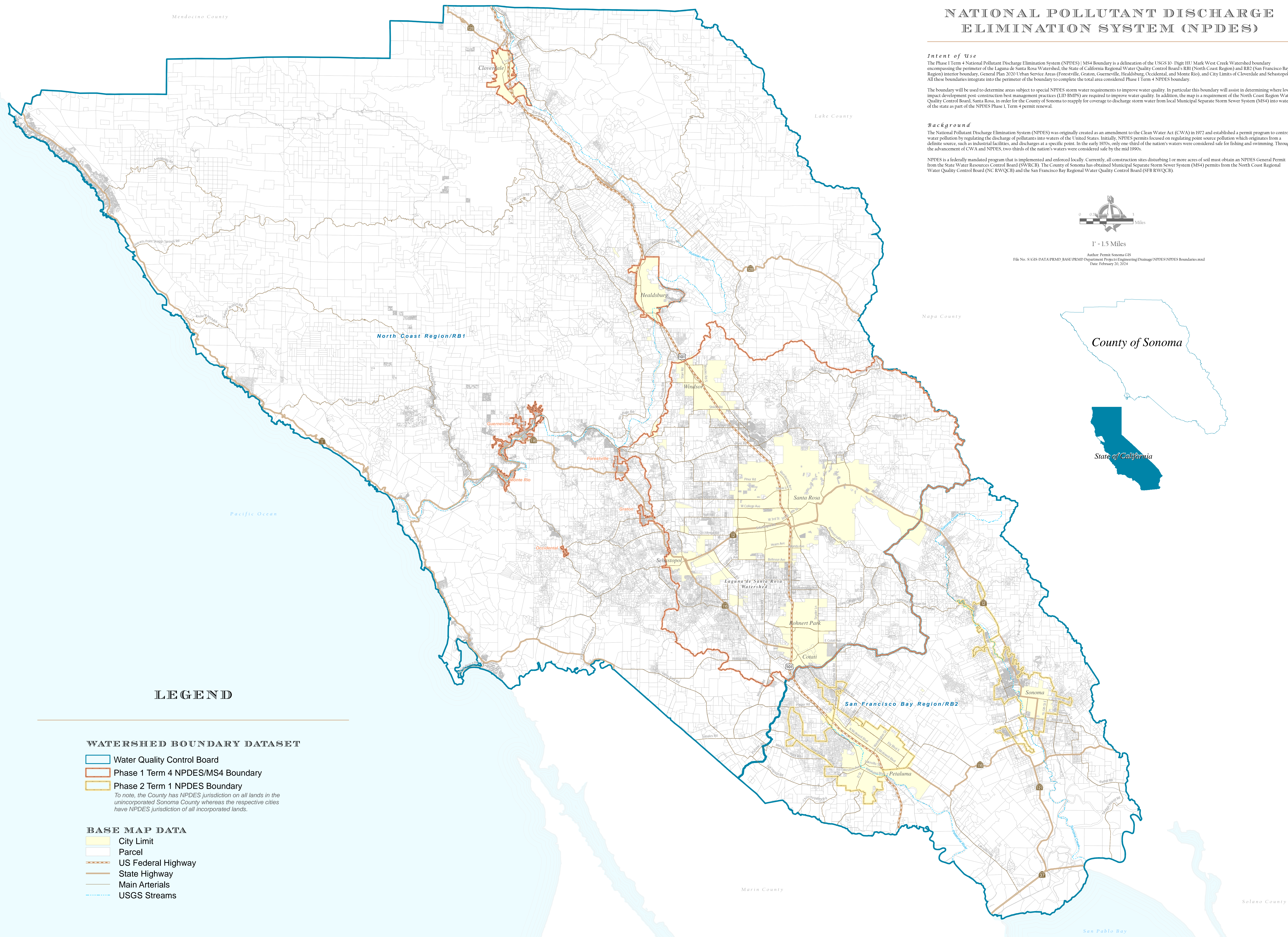
The National Pollutant Discharge Elimination System (NPDES) was originally created as an amendment to the Clean Water Act (CWA) in 1972 and established a permit program to control water pollution by regulating the discharge of pollutants into waters of the United States. Initially, NPDES permits focused on regulating point source pollution which originates from a definite source, such as industrial facilities, and discharges at a specific point. In the early 1970s, only one-third of the nation's waters were considered safe for fishing and swimming. Through the advancement of CWA and NPDES, two-thirds of the nation's waters were considered safe by the mid 1990s.

NPDES is a federally mandated program that is implemented and enforced locally. Currently, all construction sites disturbing 1 or more acres of soil must obtain an NPDES General Permit from the State Water Resources Control Board (SWRCB). The County of Sonoma has obtained Municipal Separate Storm Sewer System (MS4) permits from the North Coast Regional Water Quality Control Board (NC RWQCB) and the San Francisco Bay Regional Water Quality Control Board (SF RWQCB).



1" = 1.5 Miles

Author: Permit Sonoma GIS
 File No: S:\GIS-DATA\PRMD_BASE\PRMD_Department Projects\Engineering\Drainage\NPDES\NPDES Boundaries.mxd
 Date: February 20, 2024



LEGEND

WATERSHED BOUNDARY DATASET

- Water Quality Control Board
- Phase 1 Term 4 NPDES/MS4 Boundary
- Phase 2 Term 1 NPDES Boundary

To note, the County has NPDES jurisdiction on all lands in the unincorporated Sonoma County whereas the respective cities have NPDES jurisdiction of all incorporated lands.

BASE MAP DATA

- City Limit
- Parcel
- US Federal Highway
- State Highway
- Main Arterials
- USGS Streams

Map Scale and Reproduction methods limit precision in physical features displayed. This map is for illustrative purposes only and is not suitable for parcel specific decision making. The parcels contained herein are not intended to represent surveyed data. Site specific studies are required to draw parcel specific conclusions.

No part of this map may be copied, reproduced, or transmitted in any form or by any means without written permission from the Permit and Resource Management Department (PRMD), County of Sonoma, California. Maps contained in a planning document published by PRMD can be photocopied by members of the public for review and comment purposes.



Permit and Resource Management Department
 2550 Ventura Avenue, Santa Rosa, California 95403

