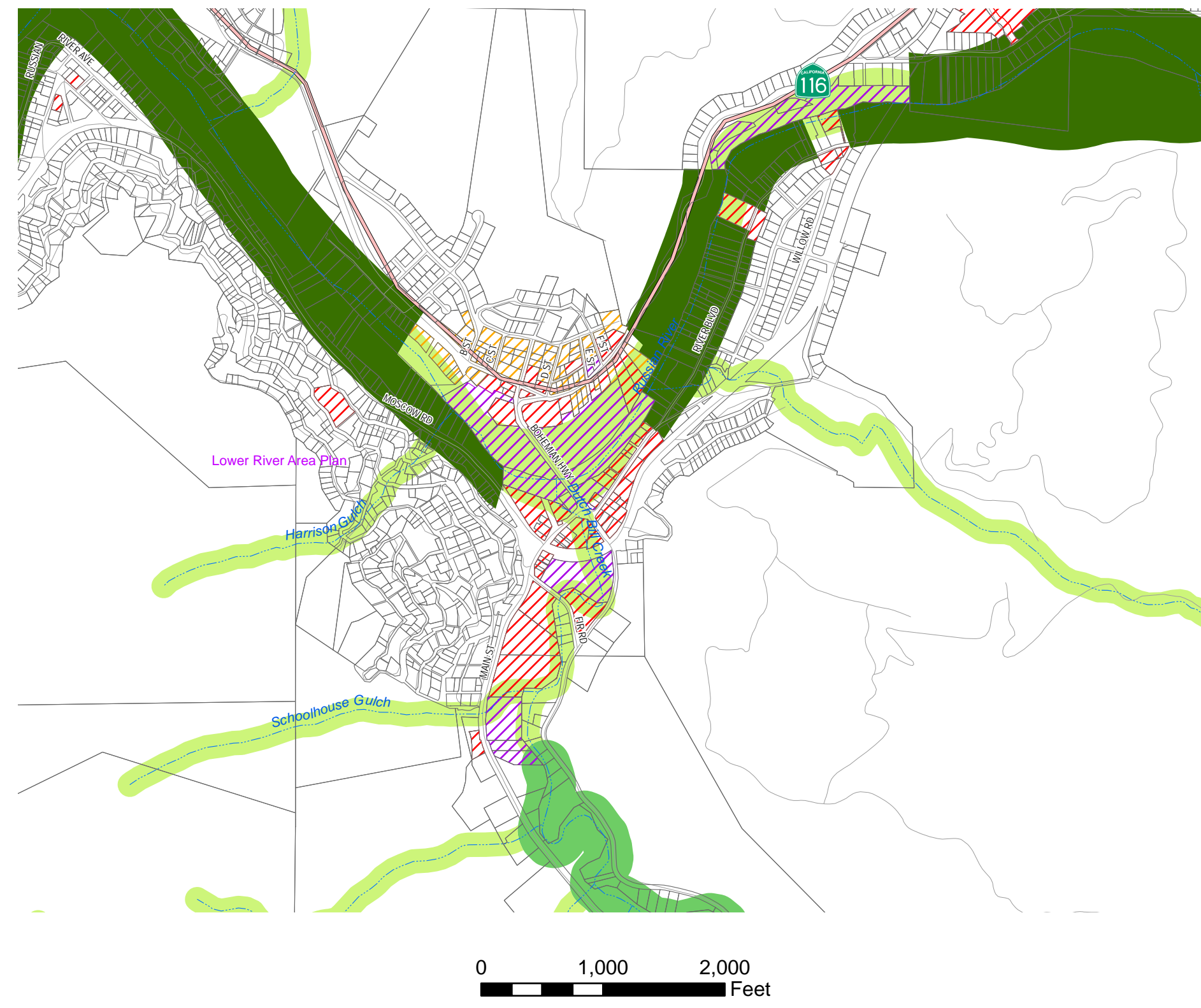
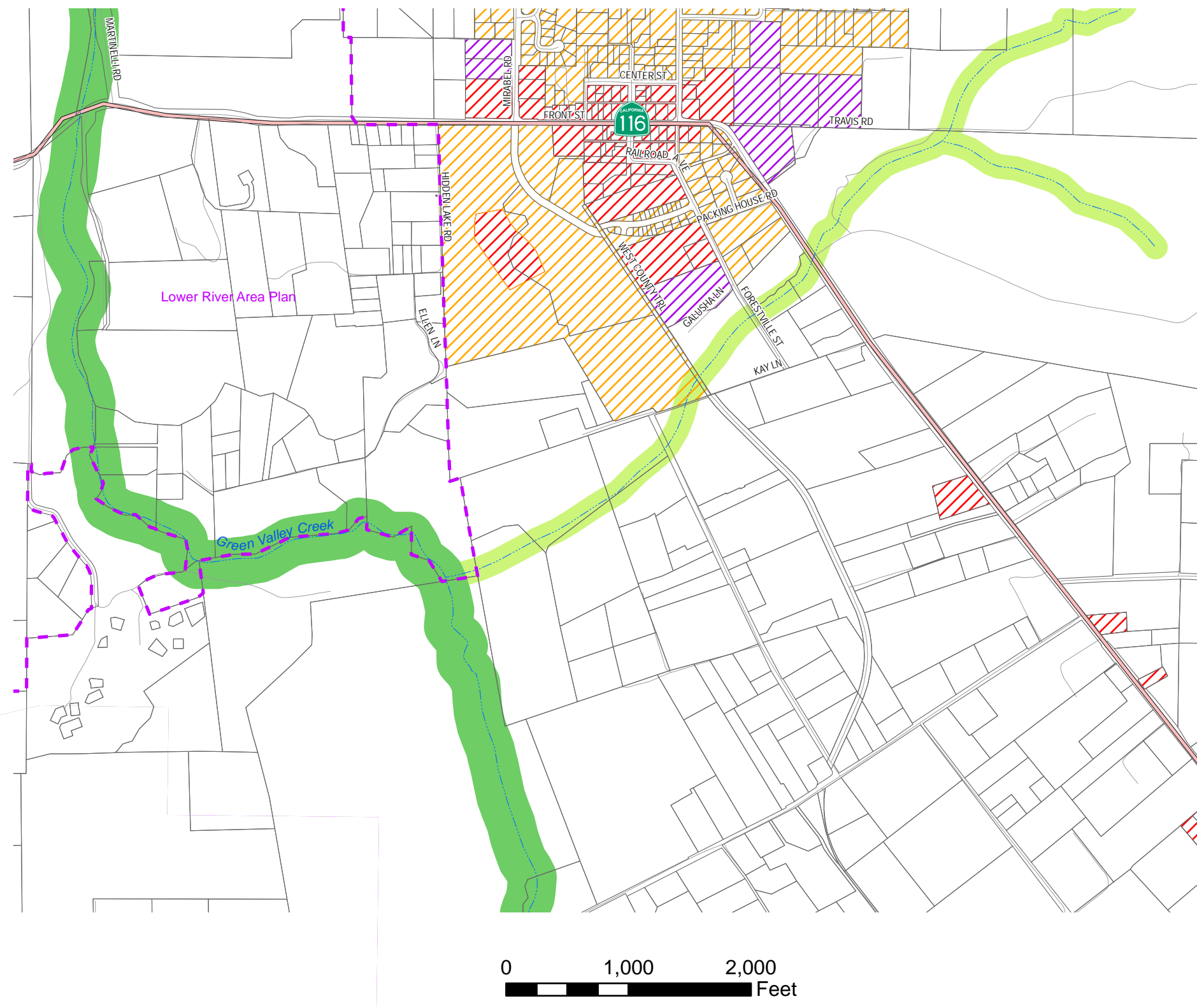


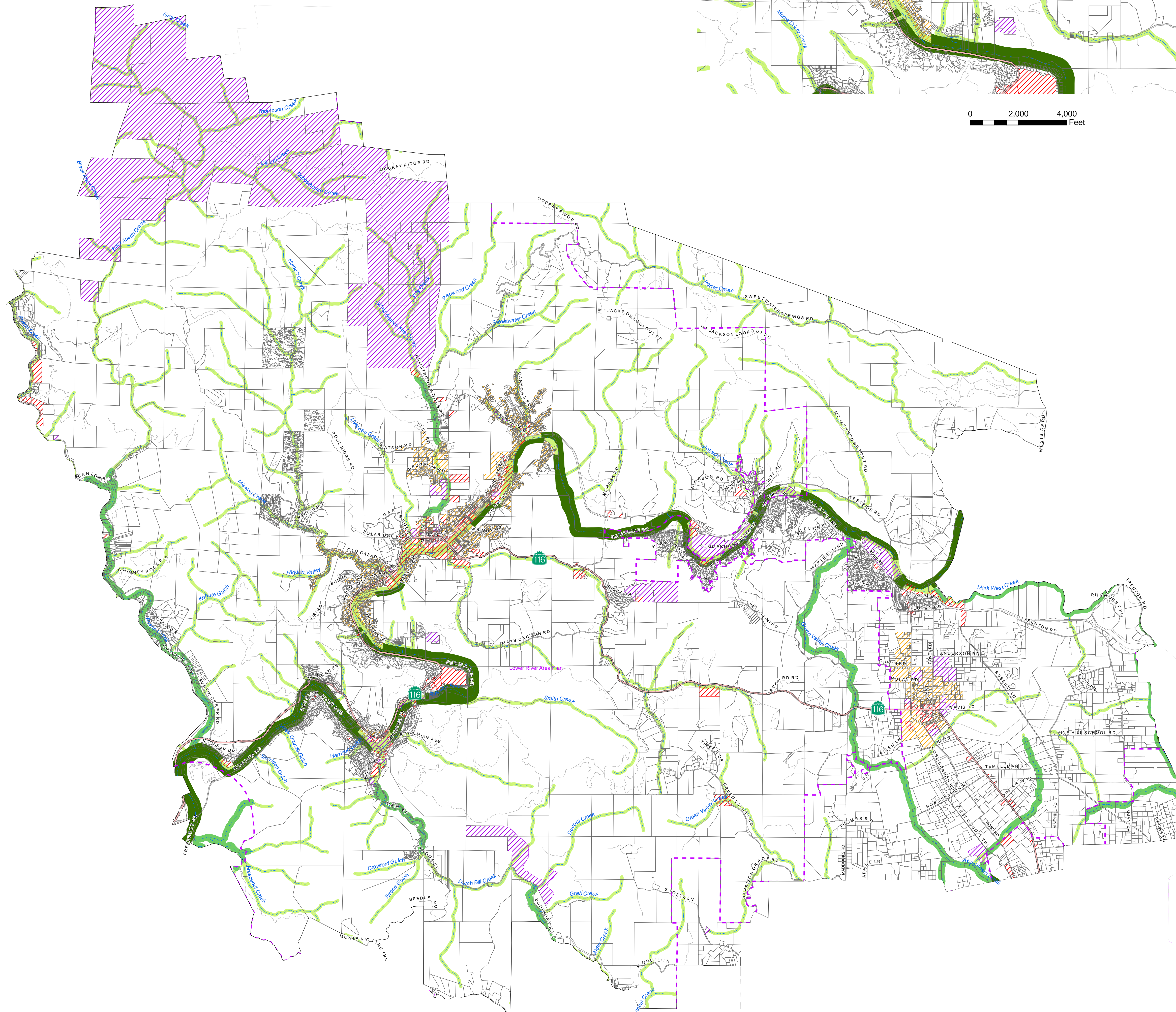
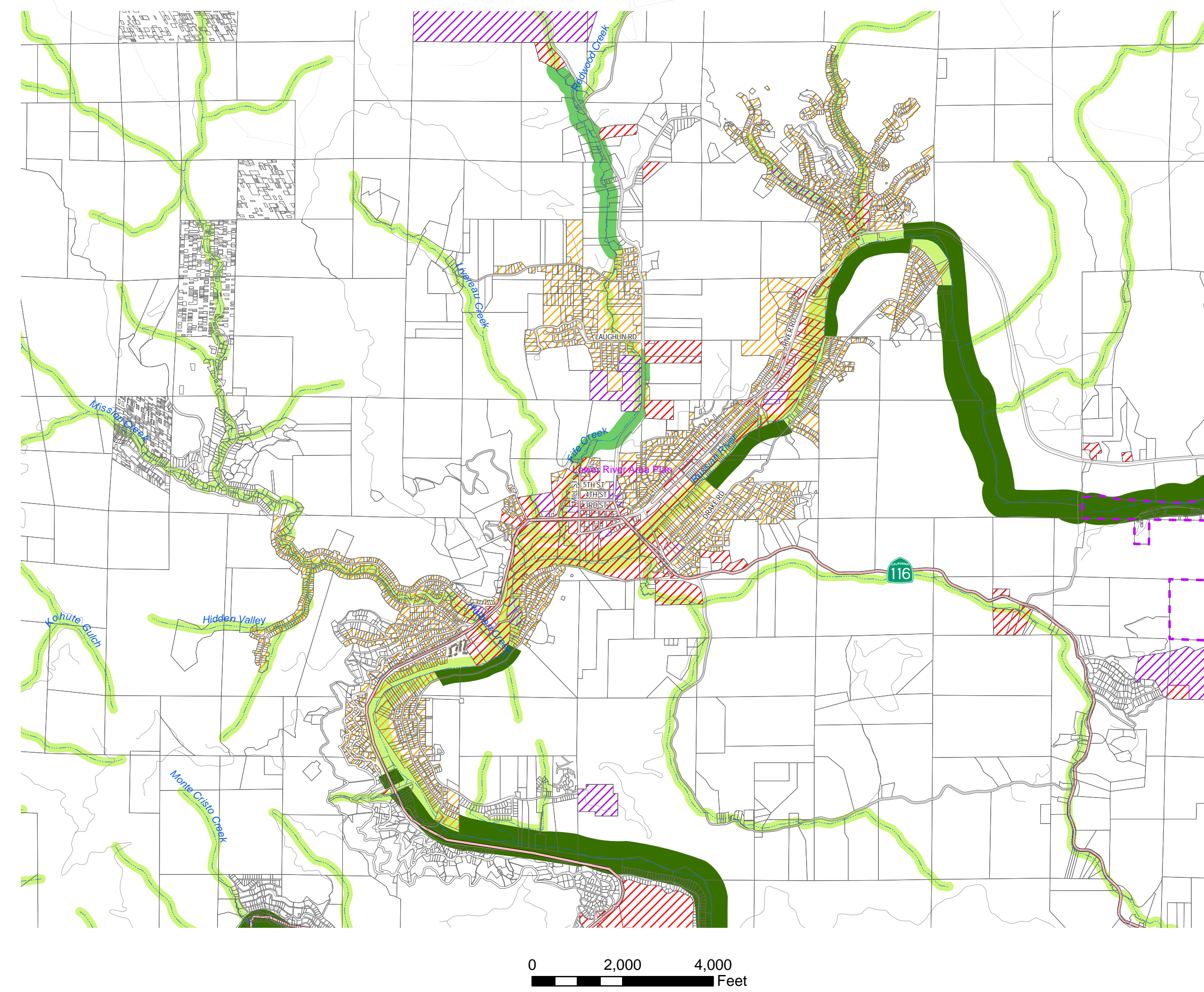
Monte Rio



Forestville



Guerneville



Base Map Data

- Assessor Parcels
- Highways
- Roads

Planning Areas



- Planning Area 1 Sonoma Coast / Gualala Basin
- Planning Area 2 Cloverdale / N.E. County
- Planning Area 3 Healdsburg and Environs
- Planning Area 4 Russian River Area
- Planning Area 5 Santa Rosa and Environs
- Planning Area 6 Sebastopol and Environs
- Planning Area 7 Rohnert Park - Cotati and Environs
- Planning Area 8 Petaluma and Environs
- Planning Area 9 Sonoma Valley

Note:
Map Scale and Reproduction methods limit precision in physical features displayed. This map is for illustrative purposes only, and is not suitable for parcel-specific decision making. The parcels contained herein are not intended to represent surveyed data. Site-specific studies are required to draw parcel-specific conclusions. Assessor's parcel data are current as of July 1, 2012.

Copyright 2003 by the County of Sonoma, California. All rights reserved. No part of this map may be copied, reproduced, or transmitted in any form or by any means without written permission from the Permit and Resource Management Department (PRMD), County of Sonoma, California.

Riparian Corridor Combining Zone

Riparian Corridor Widths

- Riparian Corridor: 50-Foot Setback from Top of Bank *
- Riparian Corridor: 100-Foot Setback from Top of Bank *
- Riparian Corridor: 200-Foot Setback from Top of Bank *

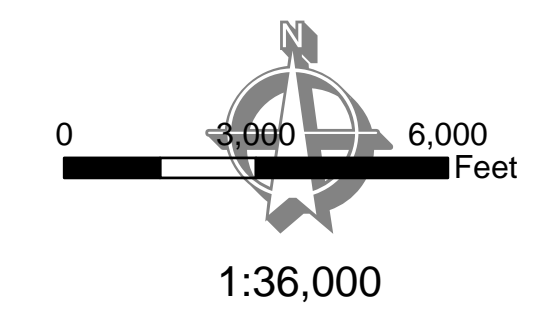
Land Use Designation

- Commercial or Industrial
- High-density Residential
- Public Quasi-Public

Base Map Layers

- Area and Specific Plan Boundary
- USGS Streams

* Note: This map is for illustrative purposes only. The Riparian Corridor setback shown on this map is approximate. The actual setback is based on site specific conditions including the actual location of the stream or river bank, the extent of the riparian vegetation, and periphery of any adjacent wetlands.



Riparian Corridor Combining District Planning Area 4 Russian River Area



Permit and Resource Management Department
2550 Ventura Avenue, Santa Rosa, California 95403
707-565-1900 FAX 707-565-1103

